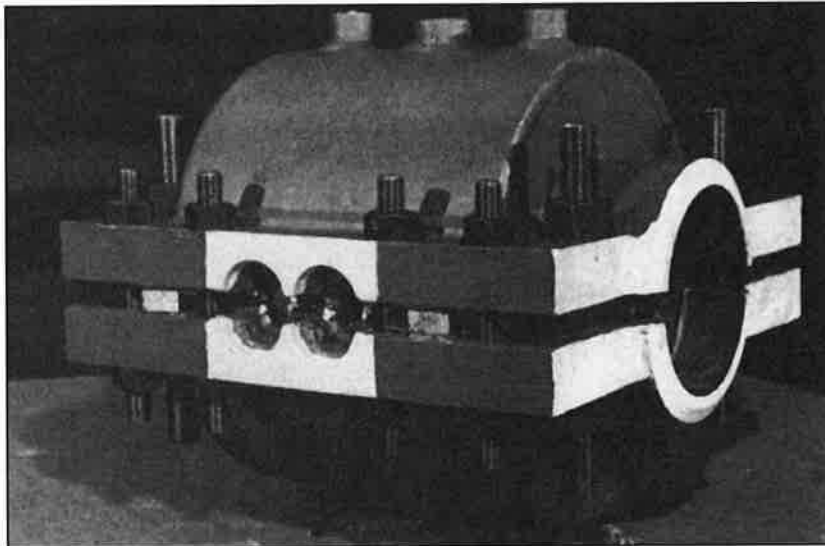
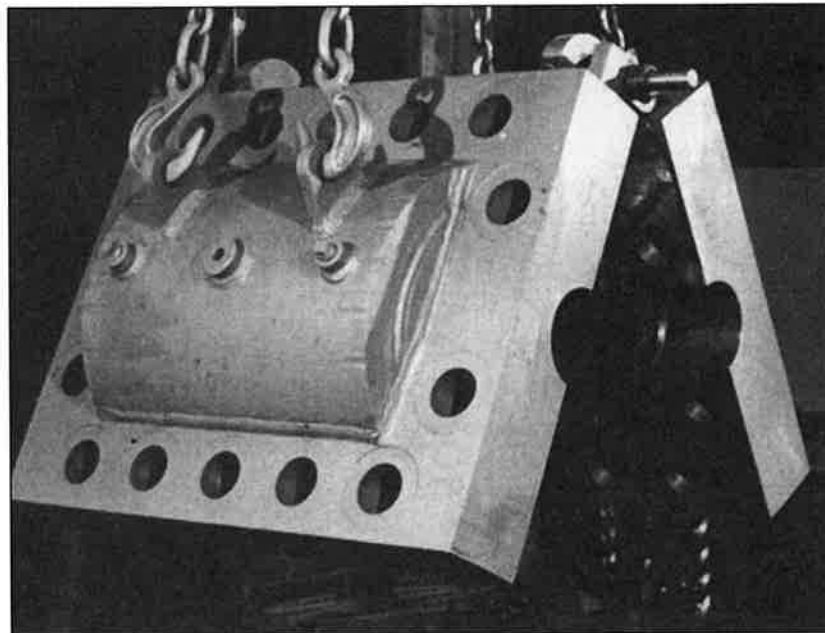


6" 150 # Plidco Flange Repair Split+Sleeve

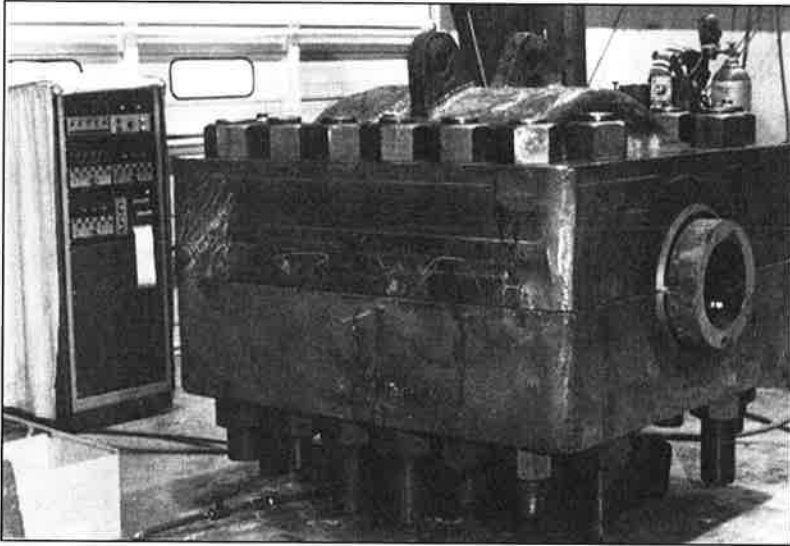


4" 300# Plidco Flange Repair Split+Sleeve with buttonhead fittings for orifice flanges.

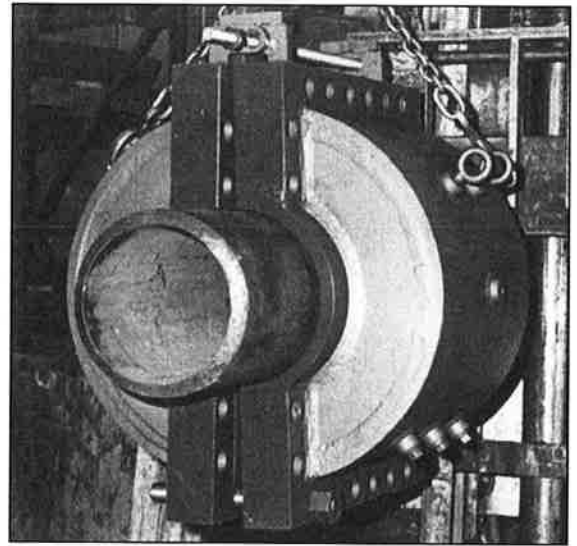


4" 1500# Plidco Flange Repair Split+Sleeve for use in the Gulf of Mexico.

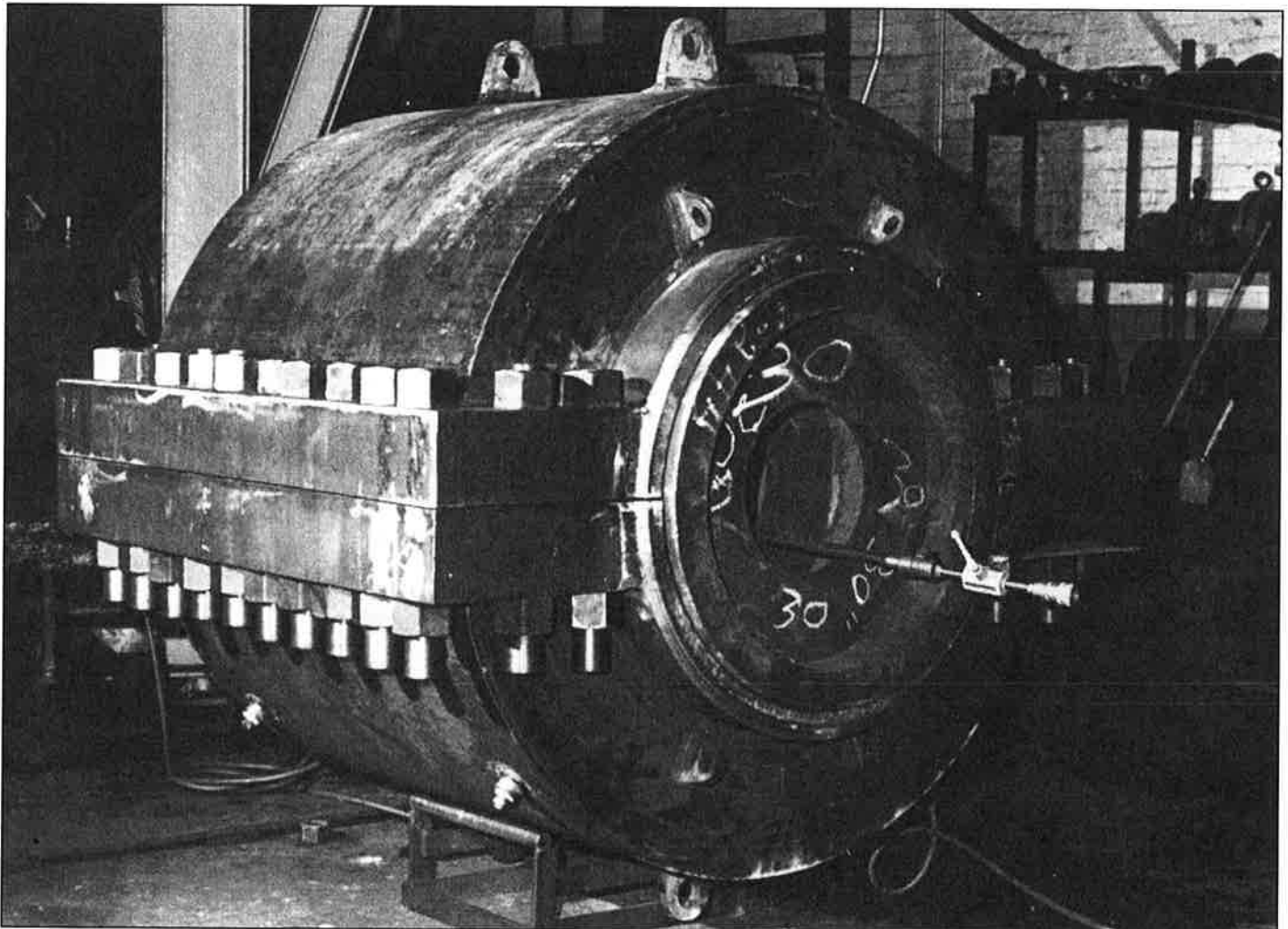
This special high pressure fitting was designed, fabricated, tested and shipped within three days from receipt of order.



16" 1500# Plidco Flange Repair Split+Sleeve under test.



12" 900# Plidco Flange Repair Split+Sleeve with hinges for offshore installation.



30" 900# Plidco Flange Repair Split+Sleeve, designed for 1440 psig working pressure, under test. The fitting weighed 14,000 pounds and was equipped with hinges for easier installation. Installed in the Gulf of Mexico.