



GLOBAL CRANE TRAINING



AC200-1 OPERATION

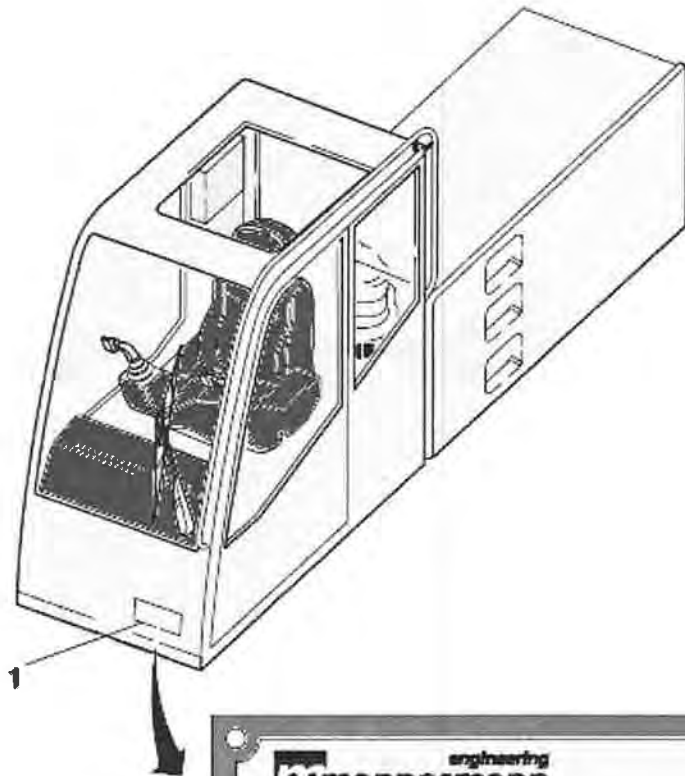
Superstructure Controls



Superstructure Controls Content



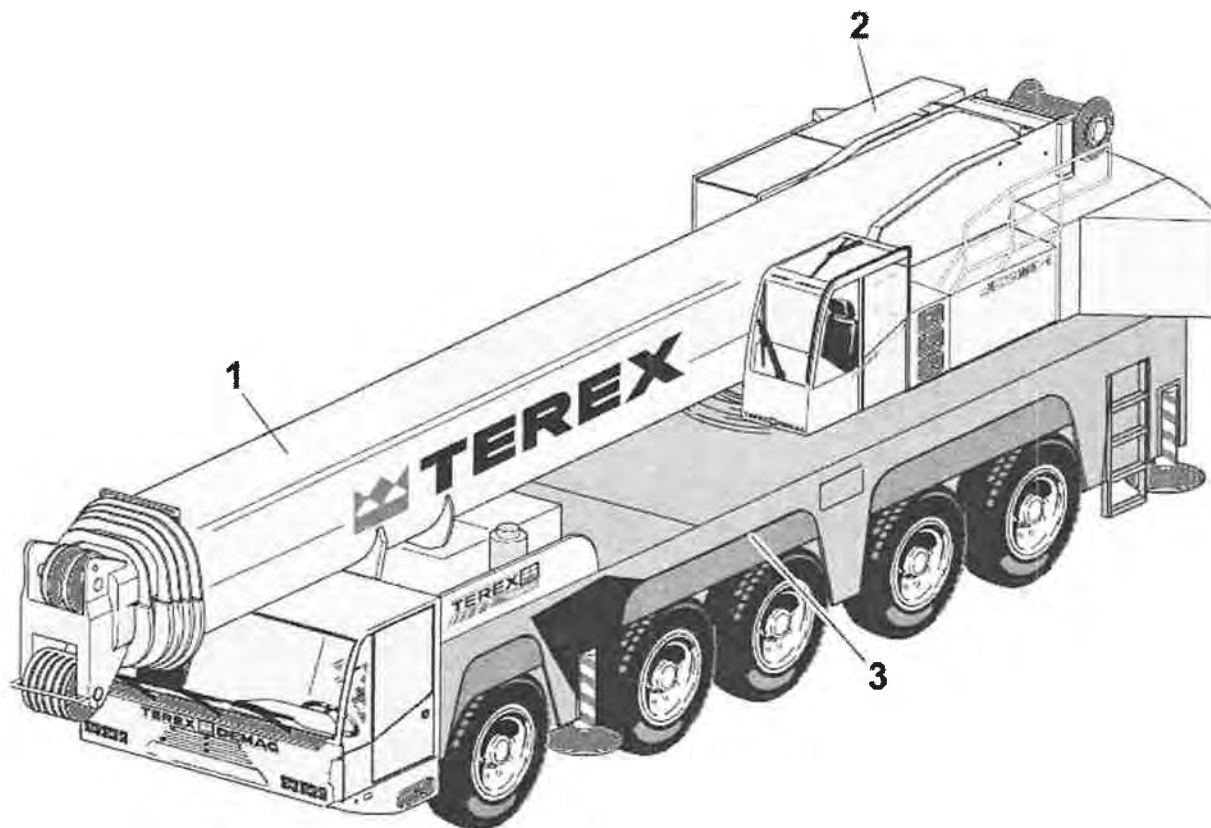
Content	Pg.	Content	Pg.
Serial plate locations	3		
Components	4		
Joystick configuration	16		



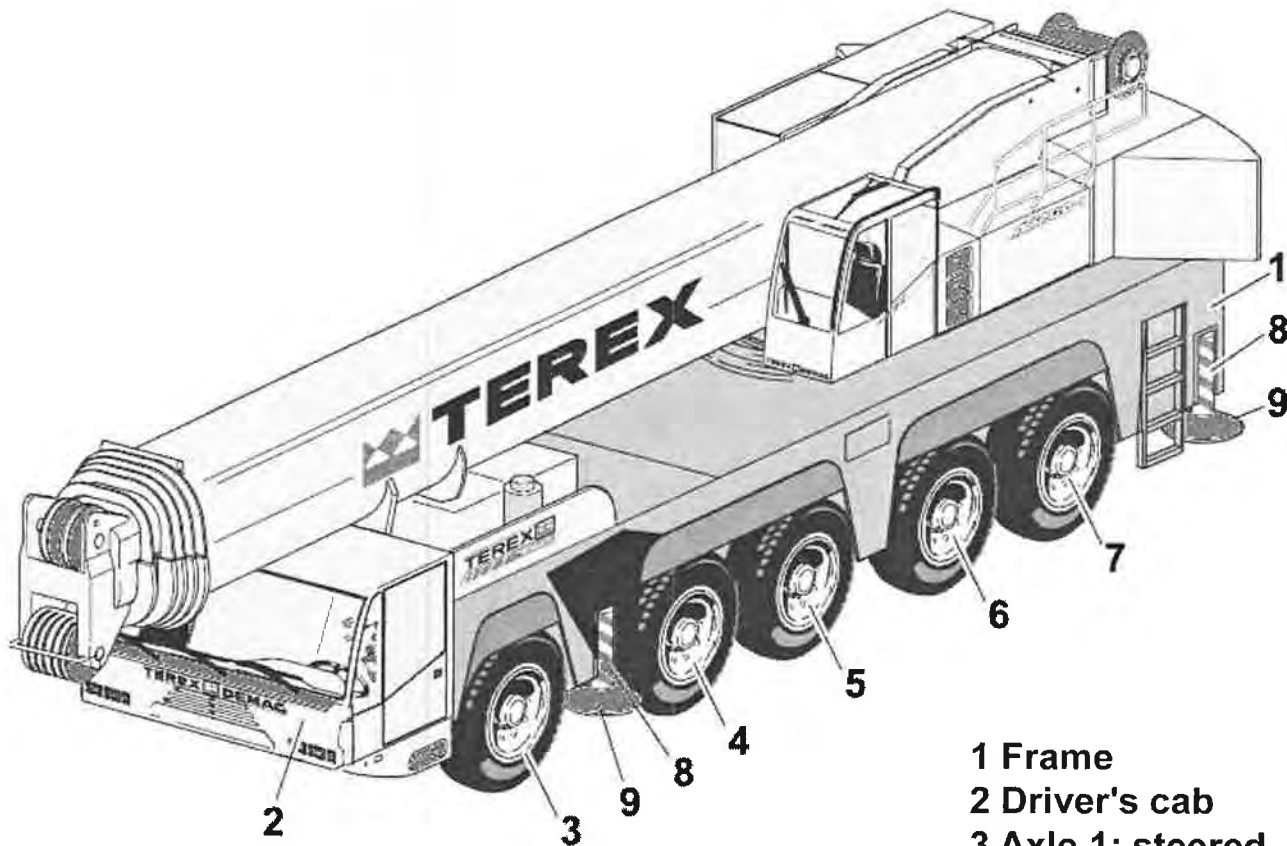
The serial plate can be found on the cab (1).
 (For the CE-design see the serial plate in the driver's cab)



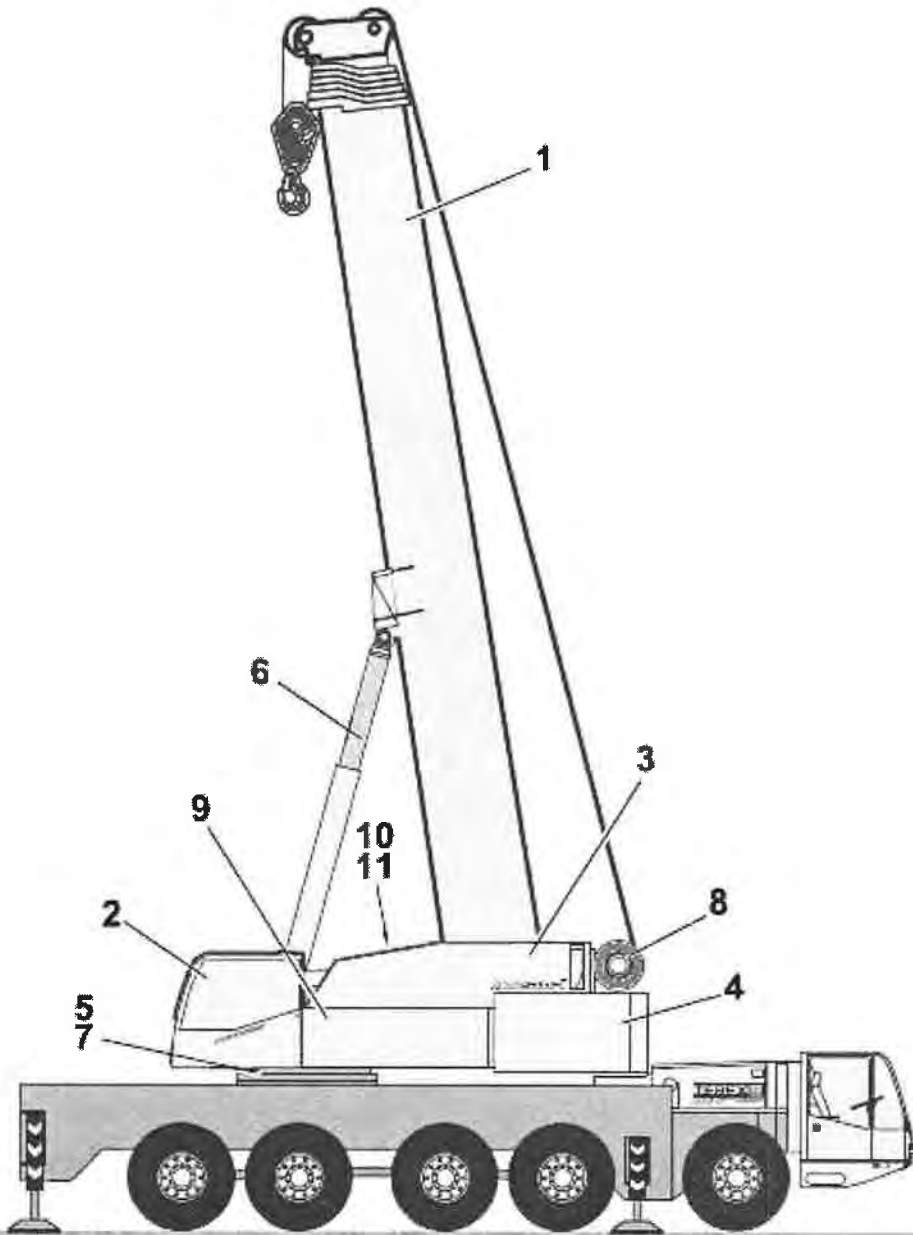
 engineering Mannesmann Dematic		GmbH Mobilkrane Am Schmalzfeld 2 D-66482 Zweibrücken	
TYP	<input type="text"/>	Jahr der ersten Inbetriebnahme	<input type="text"/>
Bau-Nr	<input type="text"/>	Betriebsgewicht	<input type="text"/> kg
MAX. TRAGFÄHIGKEIT	<input type="text"/>		t



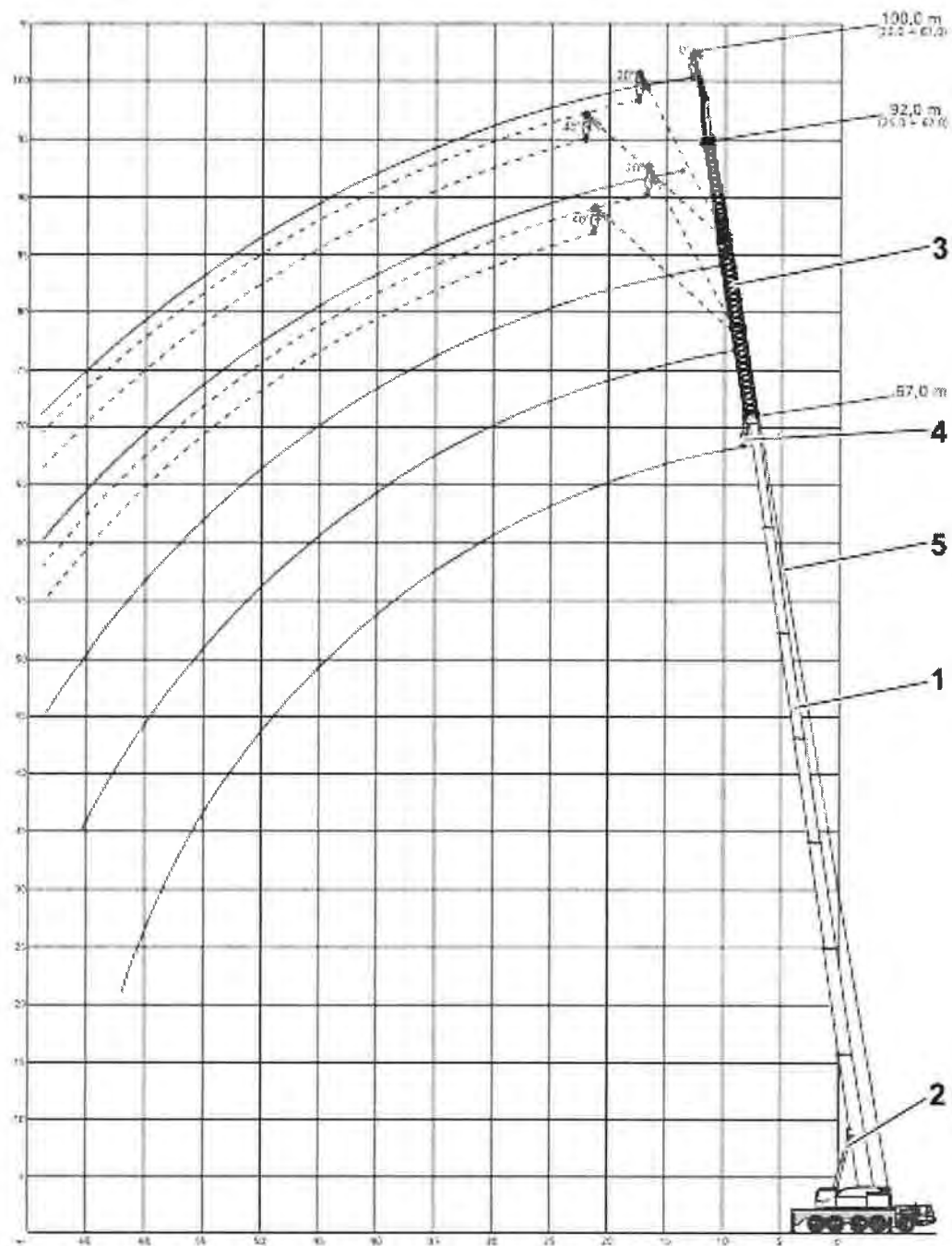
- 1 Main boom
- 2 Superstructure
- 3 Crane chassis



- 1 Frame
- 2 Driver's cab
- 3 Axle 1: steered
- 4 Axle 2: steered and driven
- 5 Axle 3: rigid, switchable drive
- 6 Axle 4: independently steered and driven
- 7 Axle 5: independently steered and driven
- 8 Outrigger
- 9 Outrigger pad



- 1 Main boom
- 2 Crane operator's cab
- 3 Superstructure frame
- 4 Counterweight
- 5 Slew ring
- 6 Luffing cylinder
- 7 Slew gear
- 8 Rope drum (HW 2, option)
- 9 Hydraulic carrier
- 10 Diesel engine
- 11 Hydraulic tank

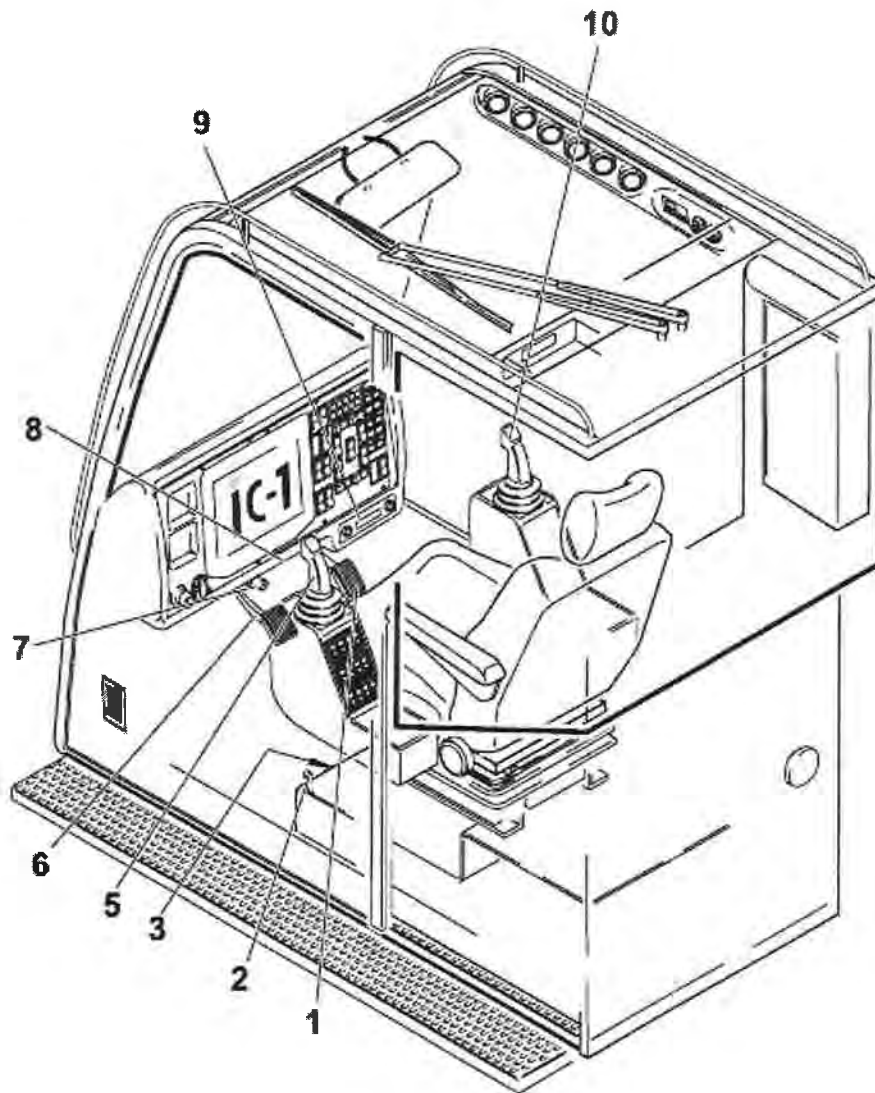


- 1 Main boom**
 - 2 Luffing cylinder**
 - 3 Main boom extension**
 - 4 Hook block**
 - 5 Hoist rope (hoist 1)**
- 2.5.1 Boom Lengths**

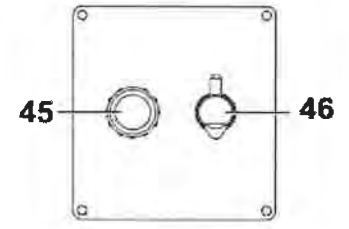
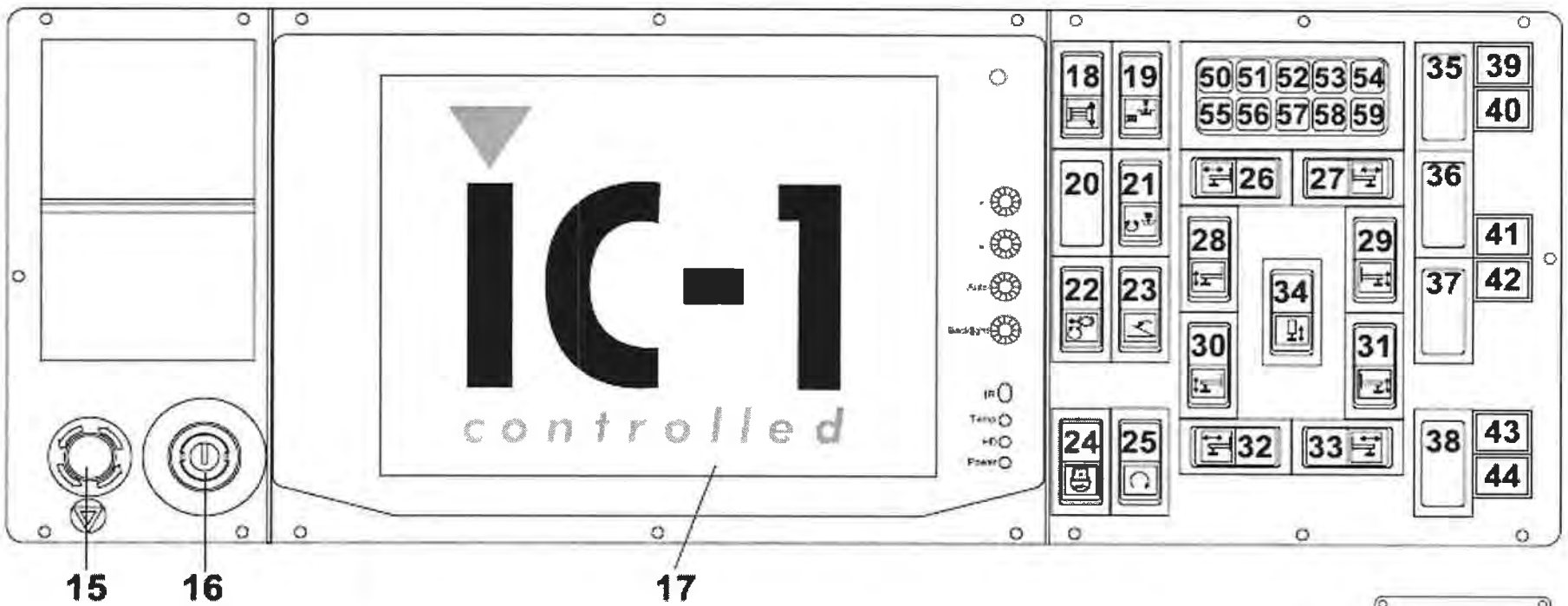
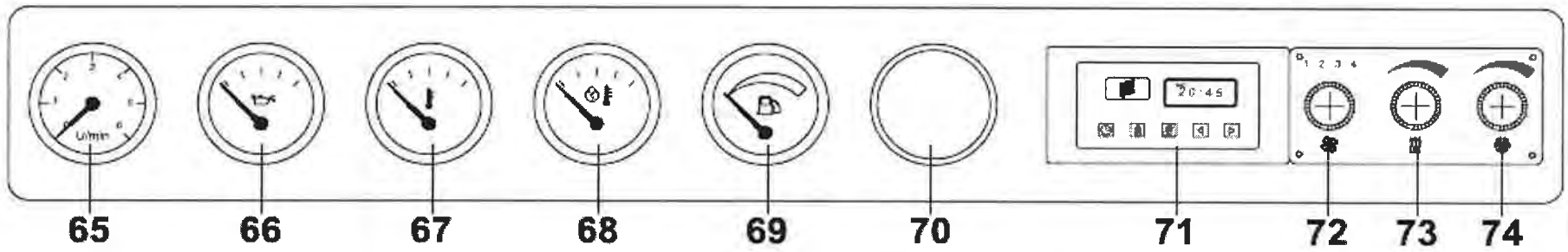
Main boom 12.4 - 67.8 m
 (Main boom length during operation with
 main boom extension 67.0 m)

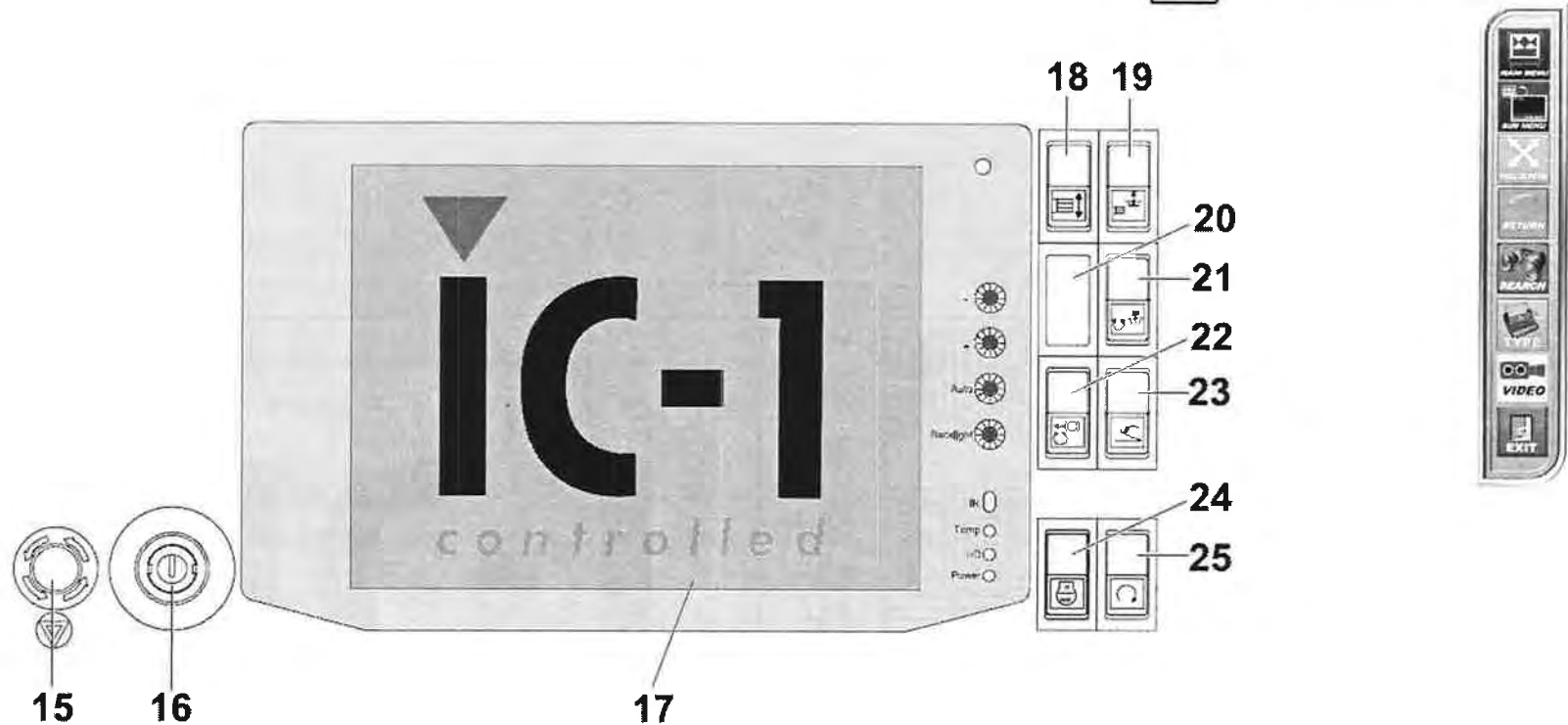
Main boom extension 9.2 - 33.0 m

*For combinations of the different boom
 components and the resulting total lengths,
 please refer to the load tables.*



- 1 Pedal - engine speed control
- 2 Lever - door catch
- 3 Actuating lever - retract/extend platform
- 5 Control lever left hand side: different modes can be selected
- 6 Pedal – slew gear brake
- 7 Horn
- 8 Warning buzzer
- 9 Radio / CD
- 10 Control lever right-hand side: different modes can be selected

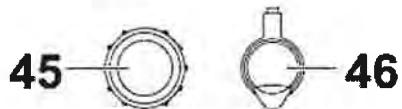
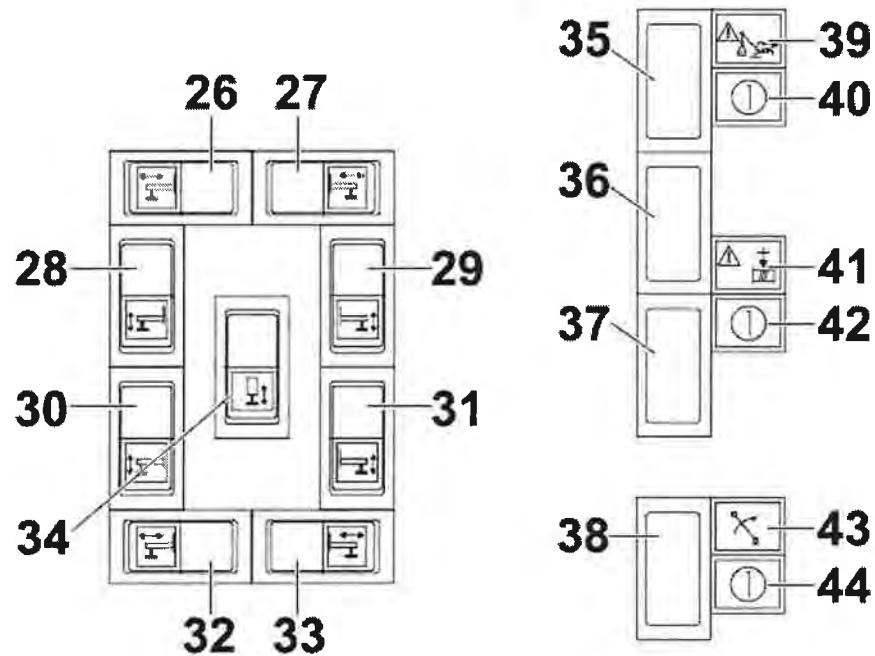




- 15 S1260 Knob Engine shutoff switch
- 16 S300 Ignition lock Engine start / stop, superstructure operation
- 17 Screen IC-1
(Intelligent Control System)
- 18 S9380 Button Raise / lower counterweight
- 19 S9370 Button Pin / unpin counterweight
- 20 Mask
- 21 S0960 Button Unpin / pin slewing gear
(State is displayed in the line
„Current configuration information“)

- 22 S8805 Switch Slew gear parking brake
- 23 S8817 Switch Switch slewing gear open / closed circuit
- 24 S1250 Double Engine control button (Speed change)
- 25 S1210 Switch / Engine start / stop chassis Button (optional)
2-step Step 1: Ignition chassis on
Step 2: Engine start chassis

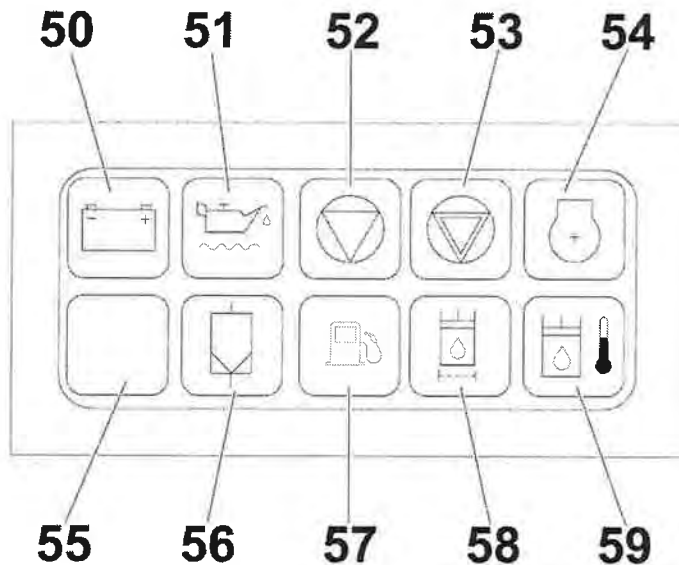
The location of switches, buttons or lamps may be different in your crane



- 26 S4316 Double- Outriggers front left, retract / button extend horizontally
- 27 S4315 Double- Outriggers front right, retract/ button extend horizontally
- 28 S4320 Double- Outriggers front left, retract / button extend vertically
- 29 S4319 Double- Outriggers front right, retract/ button extend vertically
- 30 S4322 Double- Outriggers rear left, retract / button extend vertically

- 31 S4321 Double- Outriggers rear right, retract / button extend vertically
- 32 S4318 Double- Outriggers rear left, retract / button extend horizontally
- 33 S4317 Double- Outriggers rear right, retract / button extend horizontally
- 34 S4331 Double- Outriggers complete, retract/ button extend vertically
- 35 Dummy plate
- 36 Dummy plate
- 37 Dummy plate
- 38 Dummy plate
- 39 H7924 Lamp "LLD" bridged
- 40 S7924 Key button Bridging "LLD"
- 41 H7270 Lamp "Hoist limit switch" bridged
- 42 S7270 Key button Bridging "hoist limit switch"
- 43 H7925 Lamp "Raise luffing gear" bridged
- 44 S7925 Key button Bridging "raise luffing gear"
- 45 Cigarette lighter
- 46 24V connection



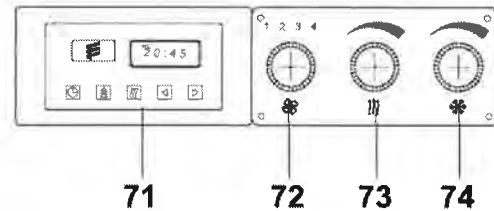
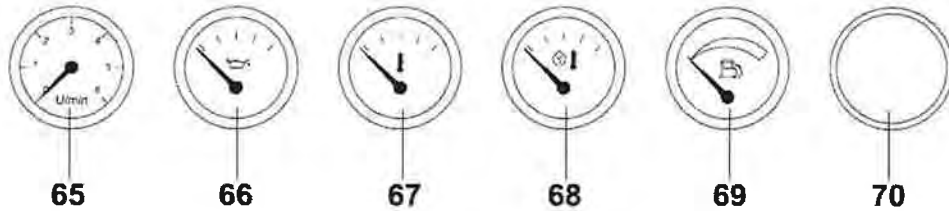


- 50 Lamp Charge current too low
- 51 Lamp Engine oil level too low
- 52 Lamp Engine stop
- 53 Lamp Engine shutoff switch
- 54 Lamp Fault ADM / engine
- 55 Lamp Fault chassis engine*
- 56 Lamp Air filter clogged
- 57 Lamp Storage tank diesel
- 58 Lamp Hydraulic oil filter clogged
- 59 Lamp Hydraulic oil temperature too high

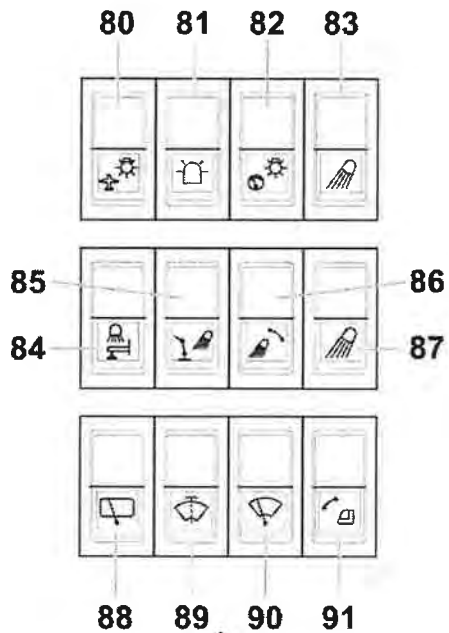
*If light 55 is lit up, the following faults may be indicated:

- Air filter contaminated
- Fault engine
- Fault transmission
- Filter hydraulic oil chassis contaminated

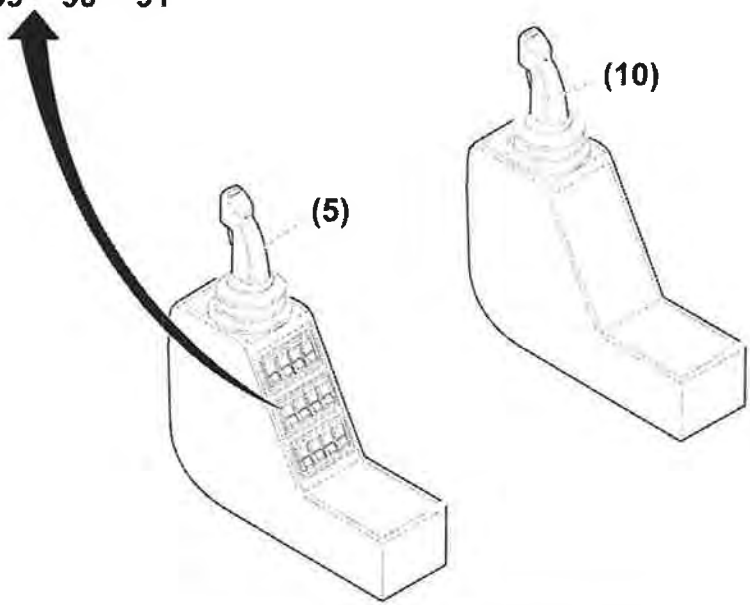


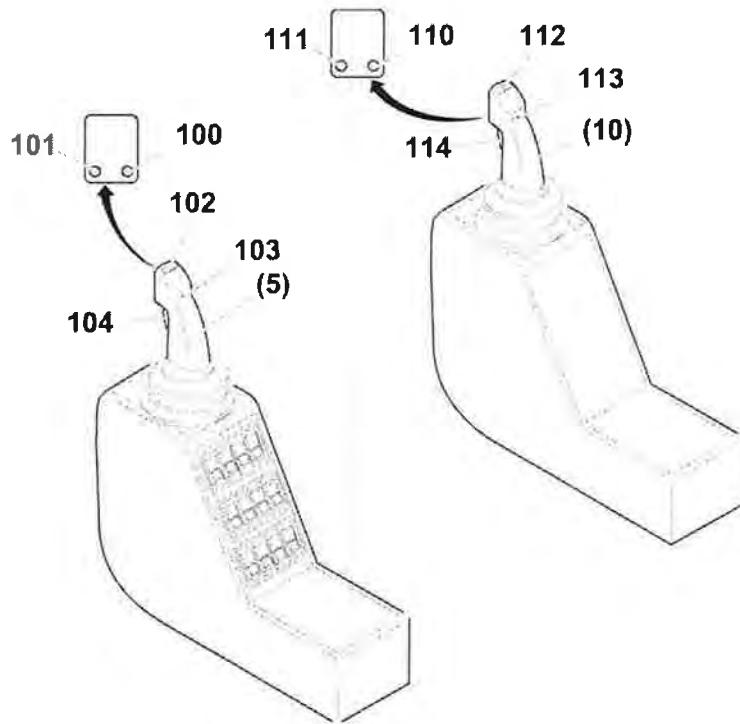


- 66 P1367 Pressure gauge Engine oil pressure display
- 67 P1351 Pressure gauge Engine temperature display
- 68 P3251 Pressure gauge Hydraulic temperature display
- 69 P0460 Pressure gauge Fuel display
- 70 Mask
- 71 A5155 Operating Engine independent warm water element heater
- 72 S5152 Rotary switch Fan
- 73 R5170 Rotary switch Regulation of engine indep. warm water heater
- 74 S5177 Rotary switch Air conditioning control



- 80 S6540 Switch Dual obstacle fire (optional)
- 81 S6411 Switch Rota-flare lighting
- 82 S1262 Switch Switch illumination
- 83 S6130 Switch Spot light superstructure, left
- 84 S6211 Switch Spot light outriggers
- 85 S6140 Switch Switch spot light on boom on / off
- 86 S6145 Double button Adjust spot light on boom
- 87 S6120 Switch Spot light on superstructure, right
- 88 S5251 Switch Windscreen wiper - Roof window
- 89 S5261 Button Windscreen wash pump
- 90 S5253 Switch Windscreen wiper - Front windscreen
- 91 S9310 Button Fold cab up or down





5) Control lever, left different modes can be selected

100 Button Fine tuning Crane motion *

101 Button High speed

102 Rockerswitch Fine tuning Crane motion *

103 Button Hoist rotation indicator

104 Button Dead man's switch

(10) Control lever, right different modes can be selected

110 Button Fine tuning Crane motion *

111 Button Overdrive gear

112 Rocker switch Fine tuning Crane motion *

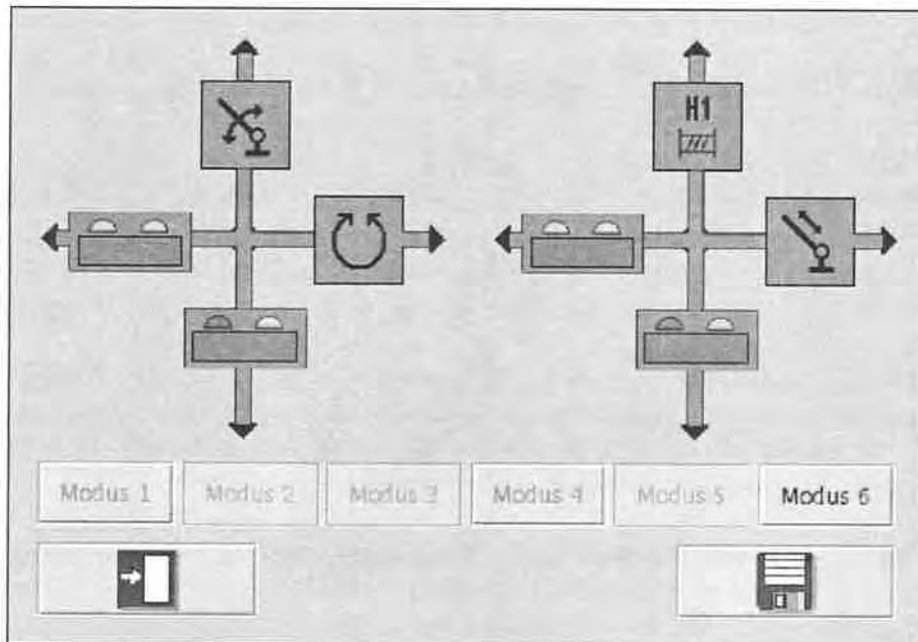
113 Button Hoist rotation indicator

114 Button Dead man's switch

* The speeds of the crane movements „Slewing gear“, „Hoist 1“, Hoist 2“ and „Luffing gear down“ can be finely tuned additionally. The movements that are carried out via the x-axle (horizontal movement of pilot control lever) of the individual pilot control lever can be regulated via the corresponding self return rocker switch (102/112). The movements that are carried out via the y-axle (vertical movement of the pilot control lever) of the individual pilot control lever can be regulated via the corresponding self-return rocker switch (102/112) and by pressing the keys (100/110; on the front side of the pilot control lever in the direction of travel, always left) at the same time.



Depending on the crane equipment, different modes (IC-1) can be selected. The option Hoist 2 is an example for a new assignment, see below:



Mode 1:

JLH = Slewing gear JRH = Luffing gear JLV = Tele JRV = Hoist 1

Mode 2:

JLH = Slewing gear JRH = Luffing gear Option: JLH = Hoist 2 JRV = Hoist 1

Mode 3:

JLH = Slewing gear JRH = Hoist 2 Option: JLH = Tele JRV = Hoist 1

Mode 4:

JLH = Luffing gear JRH = Slewing gear JLH = Tele JRV = Hoist 1

Mode 5:

JLH = Luffing gear JRH = Slewing gear Option: JLH = Hoist 2 JRV = Hoist 1

Mode 6:

JLH = Slewing gear JRH = Tele Option: JLH = Luffing gear JRV = Hoist 1



(J = Joystick, R = Right, L = Left, H = Horizontal, V = Vertical)
Observe the selected pilot control assignment in order to avoid unintentional movements. Risk of accidents!