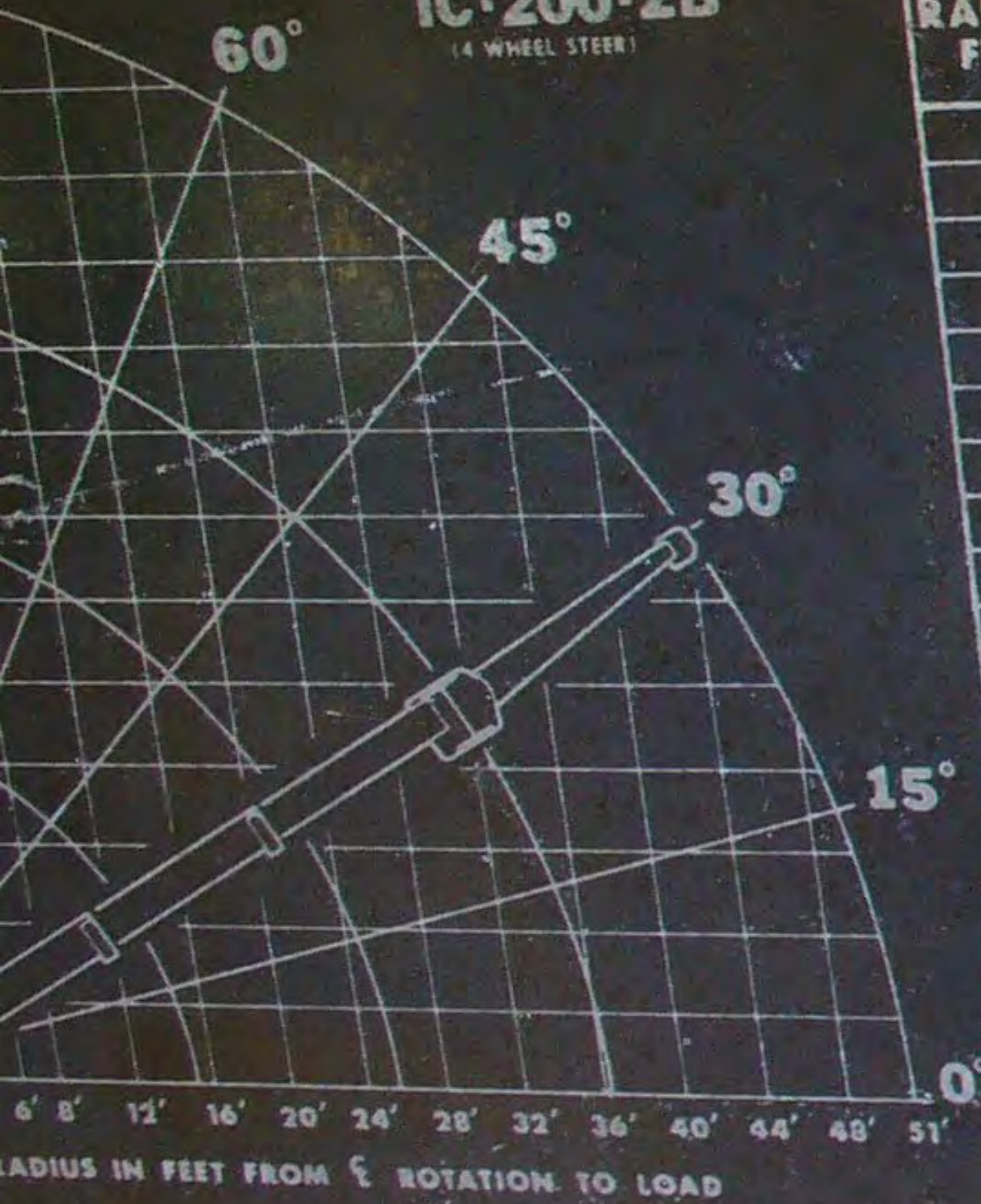


CRANE CAPACITY CHART

IC-200-2B
(4 WHEEL STEER)



ALL CAPACITIES FOR 360° ROTATION

LOAD RADIUS FEET	BOOMS RETRACTED ON OUTRIGGERS	BOOMS EXTENDED		15' BOOM EXTENSION INSTALLED	
		ON RUBBER	ON OUTRIGGERS	ON RUBBER	ON OUTRIGGERS
6	25000	16000	25000	7500	7500
8	25000	13000	23900	7500	7500
10	19500	11000	20000	7100	7100
12	16000	9300	16000	6150	6150
14	13500	6600	12500	5425	5425
16		5050	9500	4850	4850
19		3700	7900	4175	4175
22		3125	7050	3675	3675
25		2225	6100	3275	3275
28		1825	5100	2450	3000
32		1400	4080	1850	3000
36		1100	3315	1450	3000
40				1100	2500
45				775	2500
51				700	2200

CAPACITIES ON OUTRIGGERS ARE 85% OF TIPPING LOADS. CAPACITIES ON RUBBER ARE 75% OF TIPPING LOADS. CAPACITIES BELOW BOLD LINE ARE LIMITED BY TIPPING. OTHER CAPACITIES ARE LIMITED BY STRUCTURAL OR HYDRAULIC CAPABILITY.



CARRY CAPACITY SPEED LIMIT 3 MPH

DECK CAPACITY 17000 LBS. (CENTERED OVER FRONT AXLE OR BETWEEN PERSONNEL BUCKET CAPACITY, OUTRIGGERS EXTENDED, 300 LBS. PER BUCKET 600 LBS. TOTAL. THE BOOMS ON THIS UNIT ARE ALL STEEL AND HAVE NO LINE VOLTAGE RATING. MAXIMUM HYDRAULIC PRESSURE 2600 PSL

WHEN BOOM EXTENSION IS STOWED ON BASE BOOM: DEDUCT 200 LBS. FROM ALL "ON OUTRIGGERS" CAPACITIES. DEDUCT 275 LBS. FROM ALL "ON RUBBER" CAPACITIES.

ALL CAPACITIES APPLY TO OPERATION ON FIRM LEVEL SURF.

OPERATION:

1. READ AND UNDERSTAND OWNERS MANUAL BEFORE OPERATING THIS CRANE.
2. CHECK LEVEL OF HYDRAULIC OIL DAILY.
3. CHECK UNIT FOR VISIBLE DEFECTS AND LOOSE PARTS.
4. START ENGINE.
5. SET VEHICLE PARK BRAKE SECURELY.
6. EXTEND OUTRIGGERS TO SOLID FOOTING.
7. OPERATE ALL HYDRAULIC CONTROLS SLOWLY AND DELIBERATELY FOR SMOOTH MOTION.

THE LOAD HOIST LINE ON THIS UNIT MUST BE 1/2" DIA. 6 X 25 - EIP - IWRC WIRE ROPE (OR EQUIVALENT) WITH A MINIMUM BREAKING STRENGTH OF 26,000 LBS. TIRE PRESSURE 90 PSI.

MODEL NO. **IC 200 2B**

SERIAL NO. **23937**

BRODERSON MANUFACTURING CORP.
P.O. BOX 14770 LENEXA, KANSAS 66215