



GLOBAL CRANE TRAINING

AC200-1 OPERATION

Slewing



Slewing Content



Content	Pg.	Content	Pg.
Preparation for slewing	3		
Braking the S.S. using the control lever (closed circuit)	6		

Preparations for slewing

The superstructure may be slewed only with the mobile crane supported on outriggers.

Please observe the specifications in the carrier load tables.

Release the superstructure locking via button (21, S0960 "Unbolt / bolt slewing gear"). The respective status is displayed in the line C6 "Current loading information" in the IC-1.

RISK OF DAMAGE!

Never start a slewing motion via the joystick without having previously unbolted the superstructure!

Release the slew gear brake by pressing switch (22, S8805) on the dash board.

Raise the boom sufficiently high for it not to catch on other parts of the crane.

Danger of tipping over!

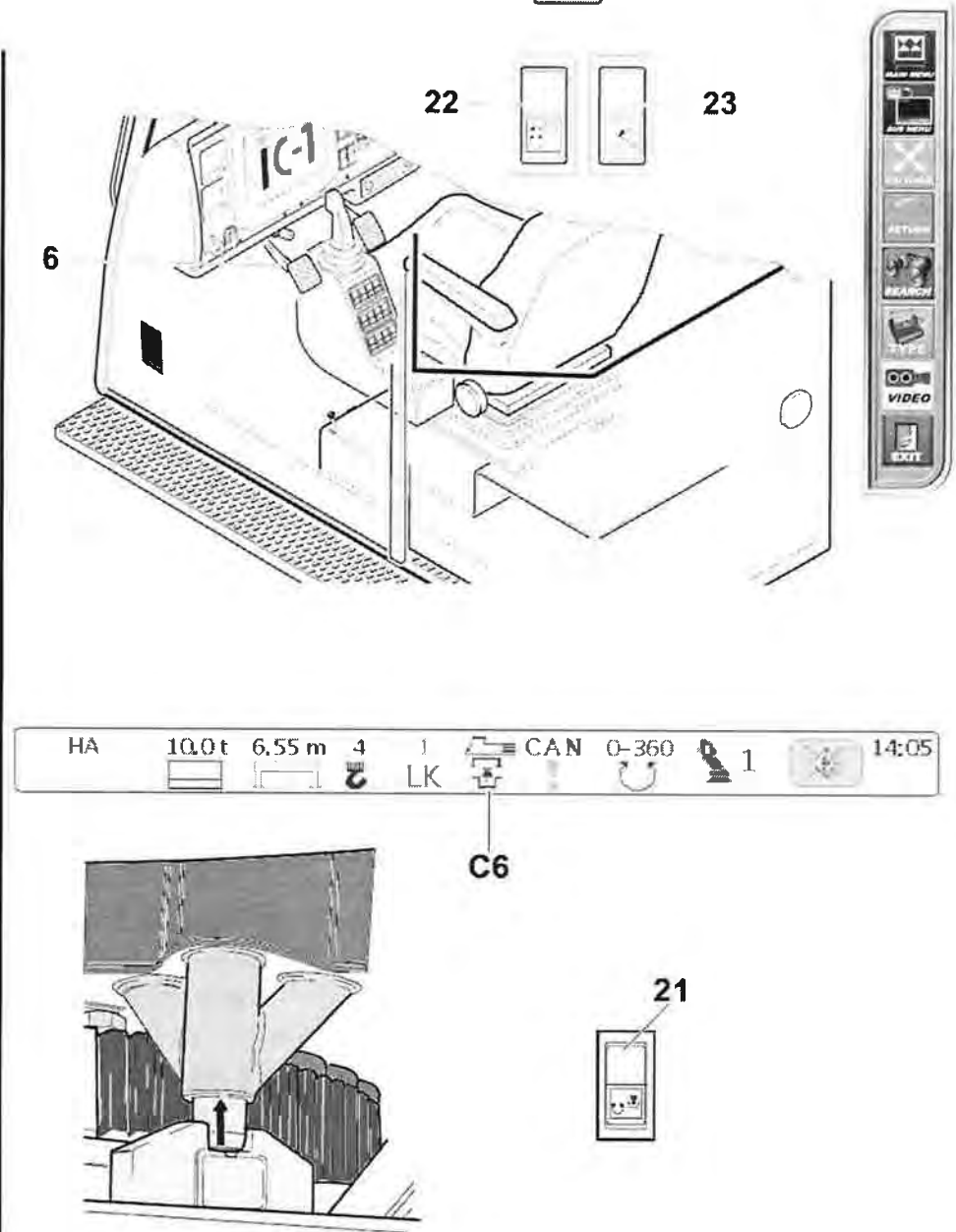
Slewing is only permissible within the overhang ranges for which the respective load capacities are specified in the tables.

Nevertheless, due to the load limit device, slewing movements are NOT switched off when loading in the overhang ranges where load capacities have not been specified in the carrier load tables. This is why there is a danger of tipping over to the front!

Slewing in the overload range (LMI has switched off) is categorically forbidden.

Do not slew over persons.

Do not jump off the slewing crane.



Mode 1:

JLH = Slewing gear JRH = Luffing gear
 JLV = Tele JRV = Hoist 1

Mode 2:

JLH = Slewing gear JRH = Luffing gear
 Option: JLV = Hoist 2 JRV = Hoist 1

Mode 3:

JLH = Slewing gear JRH = Hoist 2
 Option: JLV = Tele JRV = Hoist 1

Mode 4:

JLH = Luffing gear JRH = Slewing gear
 JLV = Tele JRV = Hoist 1

Mode 5:

JLH = Luffing gear JRH = Slewing gear
 Option: JLV = Hoist 2 JRV = Hoist 1

Mode 6:

JLH = Slewing gear JRH = Tele
 Option: JLV = Luffing gear JRV = Hoist 1

(J = Joystick, R = Right, L = Left, H = Horizontal, V = Vertical)

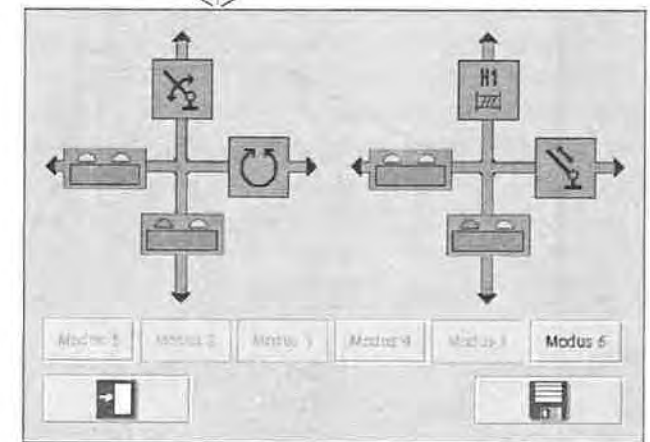
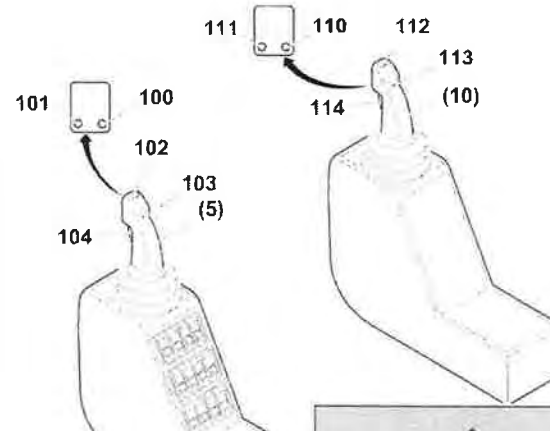
To prevent inadvertent activation of crane movements, both control levers are fitted with an additional button (104/114) (dead man's switch).

Only as long as one of the buttons is pressed is it possible to carry out a crane movement.

Observe the selected pilot control assignment in order to avoid inadvertent movements. Risk of accident!

- Lever (5/14) must not be switched from one slewing position to the other; it must first be allowed to rest in the "Off" position.

Do not switch on slewing in the opposite direction until the superstructure has come to a halt.



- The superstructure may be slewed only within the overhang range for which lifting capacity values are specified in the tables.

- Do not slew above people.

- Do not jump off the crane during slewing.

Slewing speeds

The slew gear is electrically pre-controlled. Slewing speed depends on the position of control lever.

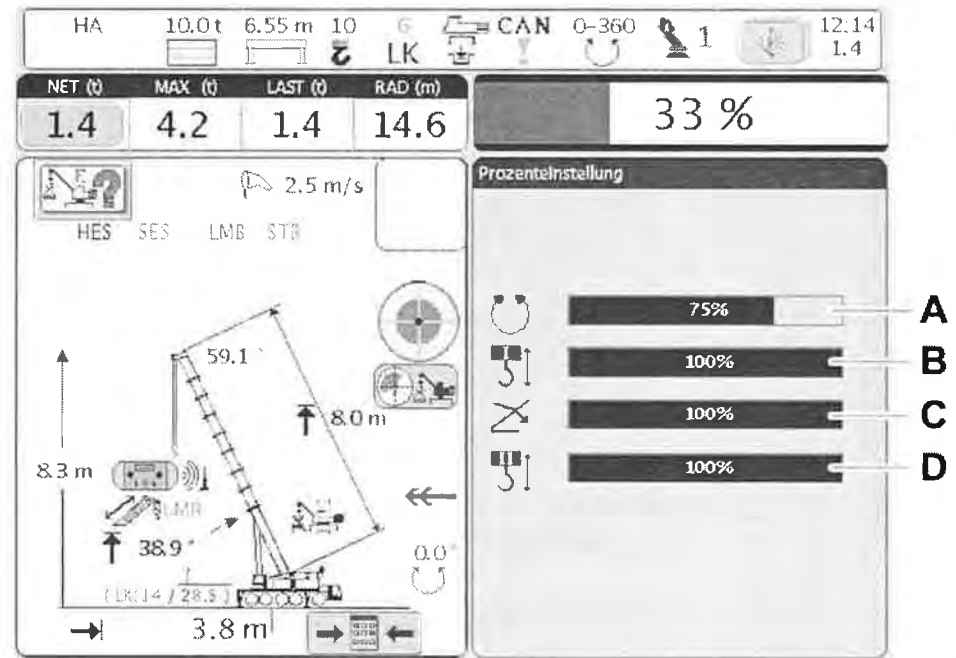
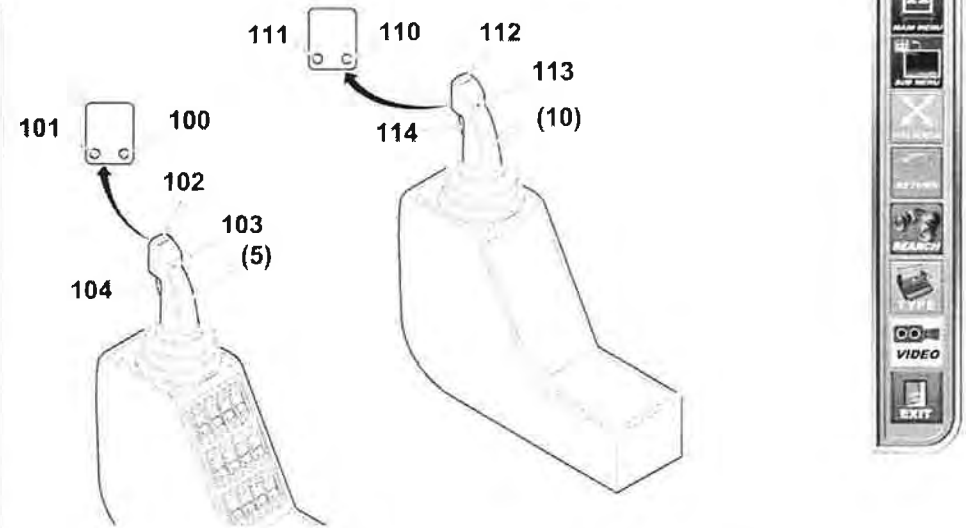
A precision setting is also possible using button (102/112) in control lever (5/14) (switch to the right - fast; switch to the left - slow).

As long as the speed is being regulated via button (102/112), the corresponding percentage is shown in the display of the load limit device (A).

Make sure slewing speed is reduced

(lower scale range) when:

- working with loads > 30 % of the maximum load
- working with a long boom
- working with main boom extension fitted



Braking the superstructure using the control lever (closed slewing gear circuit)

Proceed as follows to brake the superstructure:

Switch (23, S8817 “Switch slewing gear open/closed circuit”) is not activated.

1. Slowly return lever (5/10) to 0-position.

Avoid jerky lever movements – danger of tipping over due to load swinging.

If the main boom extension is fitted, only work with low slewing speeds.

- Before the crane operator’s cab is left, the slew gear brake must be locked by pressing switch (22, S8805).

Braking the superstructure using the pedal (opened slewing gear circuit)

To brake the superstructure, proceed as follows:

1. Bring lever (5/10) slowly back into 0 position.
2. Press down pedal (6) until the superstructure comes to a standstill.

Risk of tipping over caused by swinging of the load; therefore do not brake the slewing movement suddenly. If the main boom extension is fitted, only work with low slewing speeds.

When the slew gear brake is released and the pedal raised, the slew gear is set to free-running.

- With the slew gear brake released, the superstructure can slew of its own accord if the crane is at an angle or as a result of wind forces.

(Keep clear of buildings.)

- Before the crane operator’s cab is left, the slew gear brake must be locked by pressing switch 22, S8805).

