

MODEL 1500JBT-RATED LIFTING CAPACITIES IN POUNDS

LOAD RADIUS FEET	BOOM LENGTH IN FEET							
	27.3	34	40	46	52	58	64	70
5	30000							
10	21000	17000	16500	16000	15500	15000		
15	15000	14000	13000	12000	11000	10500	10000	9500
20	10500	10000	9500	9000	8500	8000	7500	7000
25	7700	7500	7300	7100	6700	6300	6000	5700
30		6400	6100	5800	5500	5200	4900	4700
35			5000	4800	4500	4200	4100	4000
40				4100	3800	3500	3400	3400
45				3400	3200	3000	3000	3000
50					2900	2700	2600	2600
55						2300	2200	2200
60							1800	1800
65								1500

PERMISSIBLE ROPE PULL

NUMBER PARTS LINE	9/16" DIA. (300') 6X37 IWR IPS CLASS	9/16" DIA. (310') DYFORM 18 HSLR
SINGLE	8400 LBS.	7500 LBS.
TWO	16800 LBS.	15000 LBS.
THREE	25200 LBS.	22500 LBS.
FOUR	30000 LBS.	30000 LBS.

DO NOT OPERATE THIS CRANE UNLESS YOU KNOW THE DIAMETER AND TYPE ROPE CURRENTLY INSTALLED ON THE CRANE. DO NOT EXCEED PERMISSIBLE ROPE PULL OF ROPE INSTALLED ON THIS CRANE. DO NOT USE 3 PART LINE WITH BOOM LENGTH OVER 58 FEET. DO NOT USE 4 PART LINE WITH BOOM LENGTH OVER 46 FEET. DO NOT OPERATE THIS CRANE UNTIL YOU HAVE READ AND UNDERSTOOD "LIFTING NOTES" DECAL ON PEDESTAL. 1701913

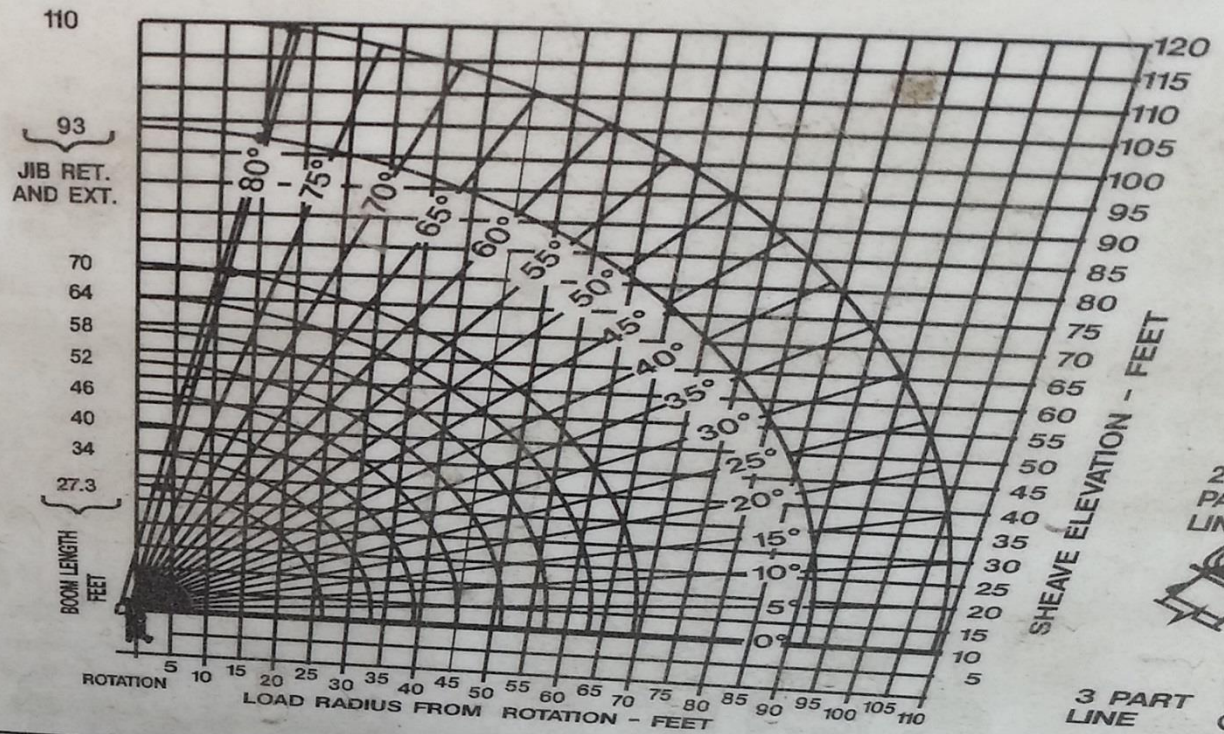
LOAD CHART

USTC INCORPORATED YORK, PA.
MODEL 1500JBT-RATED LIFTING CAPACITIES IN POUNDS

LOAD RADIUS FEET	BOOM LENGTH IN FEET							
	27.3	34	40	46	52	58	64	70
5	30000							
10	21000	17000	16500	16000	15500	15000		
15	15000	14000	13000	12000	11000	10500	10000	9500
20	10500	10000	9500	9000	8500	8000	7500	7000
25	7700	7500	7300	7100	6700	6300	6000	5700
30		6400	6100	5800	5500	5200	4900	4700
35			5000	4800	4500	4200	4100	4000
40				4100	3800	3500	3400	3400
45					3400	3200	3000	3000
50						2900	2700	2600
55							2300	2200
60								2200
65								1800
								1500

DO NOT OPERATE THIS CRANE UNLESS YOU KNOW THE DIAMETER AND TYPE ROPE CURRENTLY INSTALLED ON THE CRANE. DO NOT EXCEED PERMISSIBLE LINE PULL OF ROPE INSTALLED ON THIS CRANE. DO NOT USE 3 PART LINE WITH BOOM LENGTH OVER 58 FEET. DO NOT USE 4 PART LINE WITH BOOM LENGTH OVER 46 FEET.

PERMISSIBLE LINE PULL		
NUMBER PARTS LINE	9/16" DIA. (300') 6X37 IWR IPS CLASS	9/16" DIA. (310') OF HSLR 18.5 T. NOM. STRENGTH
SINGLE	8500 LBS.	7500 LBS.
TWO	17000 LBS.	15000 LBS.
THREE	25500 LBS.	22500 LBS.
FOUR	34000 LBS.	30000 LBS.



HOIST SPECIFICATIONS - BRADEN PD12C

PERFORMANCE @ 3000 PSI	LOW SPEED-39 GPM		HIGH SPEED-63 GPM	
	LINE SPEED		LINE SPEED	
1ST LAYER	140 FPM	230 FPM	7000 LBS.	
2ND LAYER	155 FPM	255 FPM	6315 LBS.	
3RD LAYER	170 FPM	285 FPM	5750 LBS.	
4TH LAYER	188 FPM	304 FPM	5273 LBS.	
				LINE PULL

LOAD CHART

RATED JIB LIFTING CAPACITIES IN POUNDS

23-40 FT. 2 SECTION JIB

23 FT. FIXED JIB

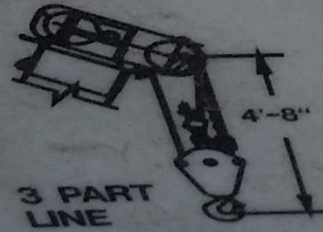
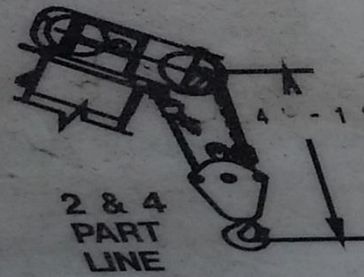
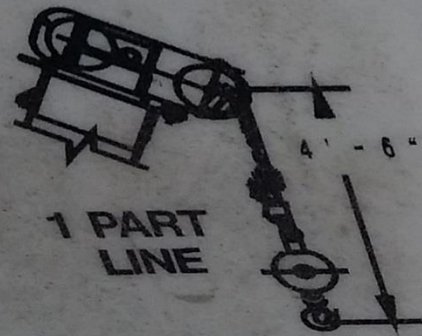
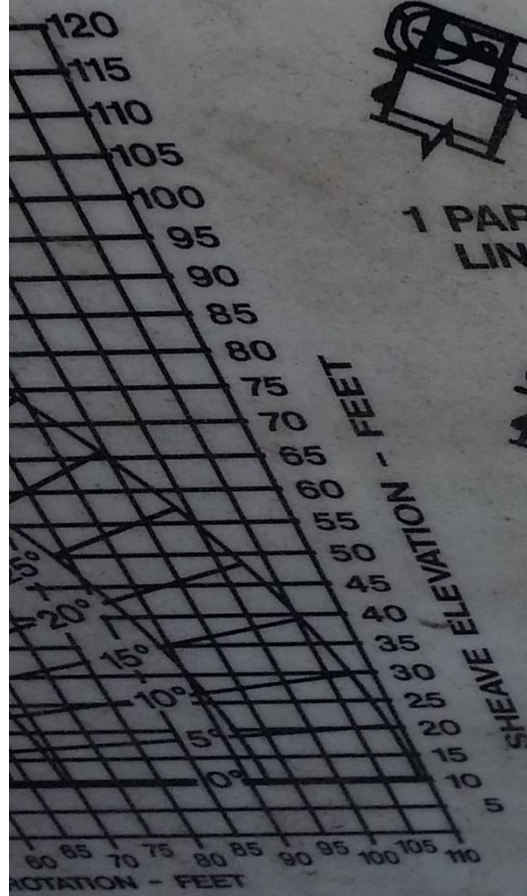
MINIMUM BOOM ANGLE	JIB FULLY RETRACTED	JIB FULLY EXTENDED	MINIMUM BOOM ANGLE	
80%%D	4300	2500	80%%D	4400
75%%D	3400	1900	75%%D	3500
70%%D	2700	1600	70%%D	2800
65%%D	2100	1300	65%%D	2200
60%%D	1800	1000	60%%D	1900
55%%D	1400	850	55%%D	1500
50%%D	1200	750	50%%D	1300
45%%D	1000	600	45%%D	1200
40%%D	900	550	40%%D	1100
35%%D	700		35%%D	900

1. CAPACITIES BASED ON ANGLE OF MAIN BOOM REGARDLESS OF BOOM LENGTH.
2. RATED LOADS ON JIB ARE BASED ON STRUCTURAL STRENGTH.
3. DO NOT USE JIB FOR MULTI-PART LINE OPERATIONS.
4. IF ACTUAL BOOM ANGLE FALLS BETWEEN CHART VALUES LISTED, USE LIFTING CAPACITY FOR NEXT LOWER BOOM ANGLE.

WEIGHT REDUCTION FOR LOAD HANDLING DEVICES

- HEADACHE BALL 130 LBS.
- HOOK BLOCK (SINGLE SHEAVE) 220 LBS.
- HOOK BLOCK (DOUBLE SHEAVE) 300 LBS.
- 2-SECTION JIB STOWED 100 LBS.
- 2-SECTION JIB ERECTED (RETRACTED) 1000 LBS.
- 2-SECTION JIB ERECTED (EXTENDED) 1100 LBS.
- 1-SECTION JIB STOWED 75 LBS.
- 1-SECTION JIB ERECTED 750 LBS.

1702761



OPERATIONS - BRADEN PD12C

SPEED	HIGH SPEED-63 GPM	
	LINE SPEED	LINE PULL
35 FPM	230 FPM	7000 LBS.
45 FPM	255 FPM	6315 LBS.
70 FPM	285 FPM	5750 LBS.
105 FPM	304 FPM	5273 LBS.