

ELECTRIC SHOP GANTRY CRANE

4 ton Gantry crane VESTIL AHS-8-10-12



SAFETY GUIDELINES

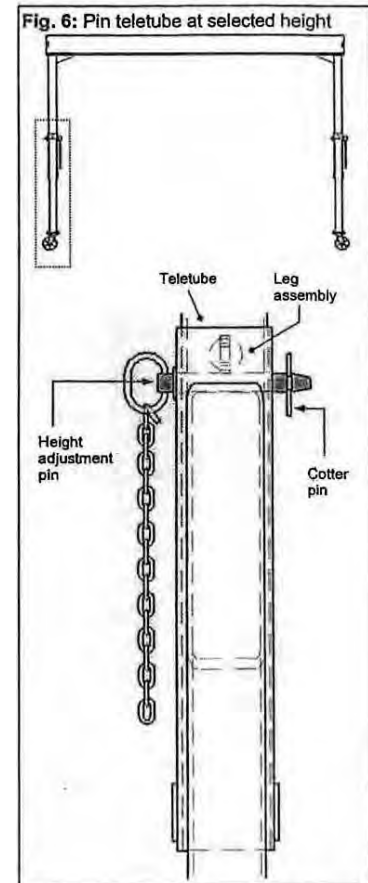
- DO NOT use the crane in an area where it might contact electrified wires, to avoid electrocution.
- DO NOT use a structurally damaged or malfunctioning crane. ALWAYS inspect the crane prior to use.
- DO NOT attempt to lift a load that weighs more than the rated capacity.
- DO NOT stand beneath or travel under the crane if a load is suspended.
- DO NOT allow people to ride on the load.
- Warn others in the area when you are about to operate the crane to stand clear of the crane and suspended load during operation. Use barricade tape if required.
- DO NOT use the crane if any label is damaged, unreadable or absent.
- DO NOT use the crane to move or transport loads, ONLY use the crane to lift loads.

USE INSTRUCTIONS

- Only qualified, designated crane operators should use this device (trained shop craftsmen).
- Always carefully watch the boom and any load hanging from it while using the crane.
- BEFORE the load is connected to the hoist, lock or immobilize the castors.
- DO NOT use the crane and notify your supervisor if you notice any damage or hear any unusual noise during operation.

Height Adjustment

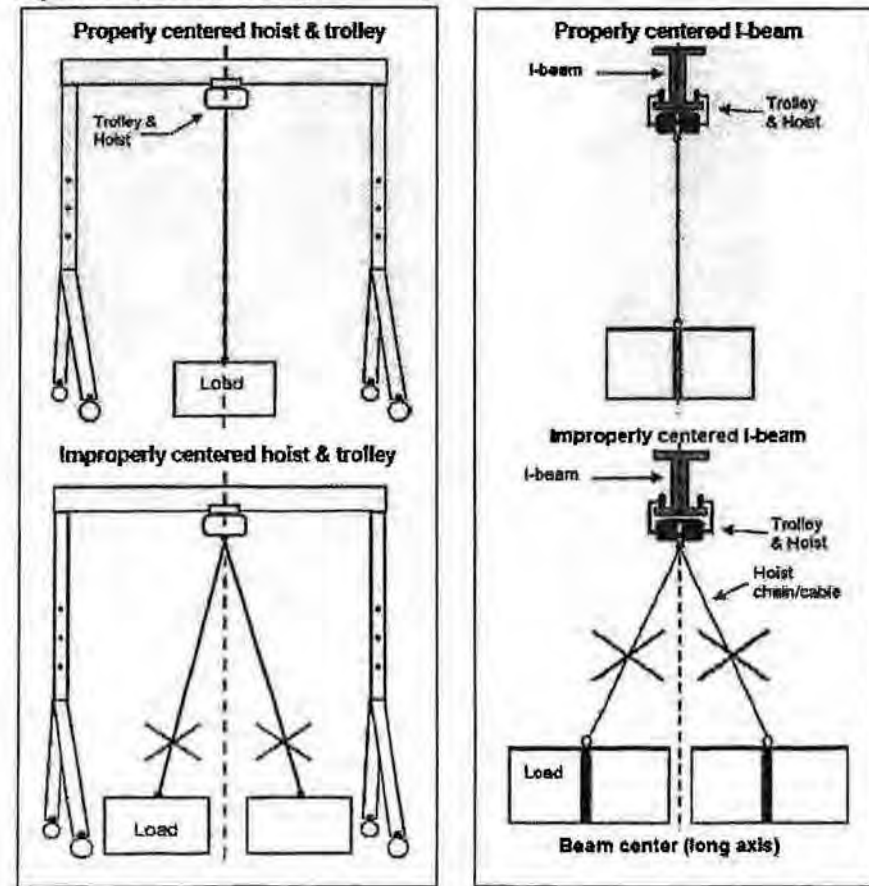
- Support the I-beam so that the height adjustment pins can be removed, for example, with the tines of a forklift or an overhead crane.
- Raise the beam to the desired height; then pin the tele-tubes to the leg assemblies. Each pin must extend completely through the leg assemblies.



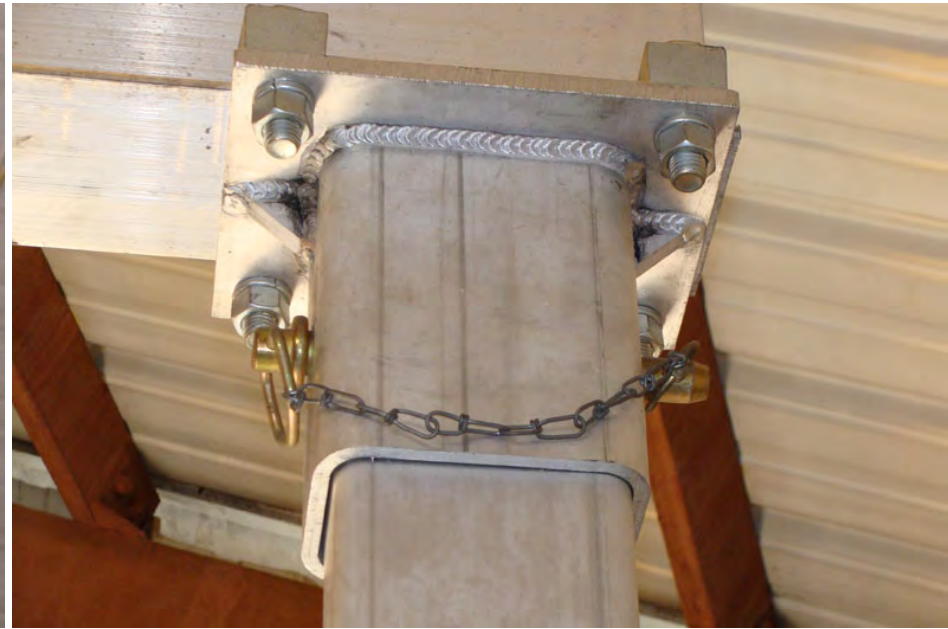
PROPER LOADING

- Position the Trolley and Hoist directly above the load.
- Operate the hoist according to manufacturers instructions.
- Always include the weight of the hoist and trolley when calculating load.
- **DO NOT use the crane to move or transport loads, ONLY use the crane to lift loads.**
- If you must move the load to a different location, lower the load to a supporting surface such as a pallet or cart. Move the crane and load separately. Then reposition the crane over the load.

Fig. 7: Proper Load Lifting



Gantry Crane Comparison



Compare ruggedness of caster construction between the VESTIL 4 ton "lift-only" Gantry crane and Rigging Depts SPANCO 3 ton "lift and transport" Gantry crane.



800-348-0868



Vestil Manufacturing

Serving the Material Handling Industry for over 50 years!

Home Products Contacts Literature About Vestil Search Help?

INDUSTRIAL LADDERS	PROTECTIVE BARRIERS	DRUM HANDLING EQUIPMENT	INDUSTRIAL CARTS & DOLLIES	STORAGE SOLUTIONS
LOADING DOCK EQUIPMENT	ERGONOMIC SOLUTIONS	PACKAGING EQUIPMENT	GANTRY & JIB CRANES	FORK TRUCK ATTACHMENTS

Gantry Cranes & Jibs

March 20, 2013



Vestil Quick Search

Search (Enter Model # or Keyword)

Gantry Cranes Are Not To Be Moved While Loaded.



Download The [Steel Gantry Crane Owners Manual](#) in PDF format.

Fixed and Adjustable Steel Gantry Cranes

Industrial Steel Gantry Cranes are designed for transporting and positioning materials. Solid steel construction will provide years of service. Choose from a variety of sizes. Large 8" diameter locking phenolic casters with roller bearings will facilitate easy mobility from one area to another when unloaded. More economical and flexible than permanent cranes. Features quick setup design. Order optional Lever Ratchet for easy one-person height adjustment (not for fixed models). Height is adjustable in 6" increments on adjustable-height models. Blue finish. Hoist and trolley sold separately, see page 84.



Festoon System

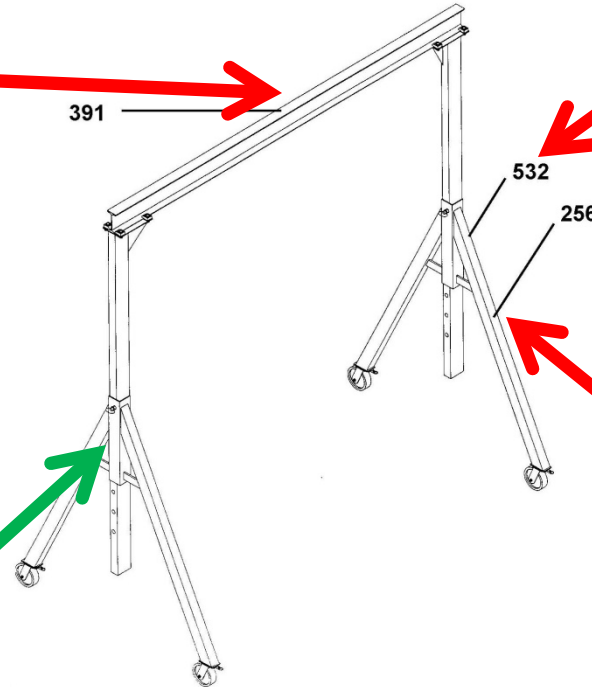
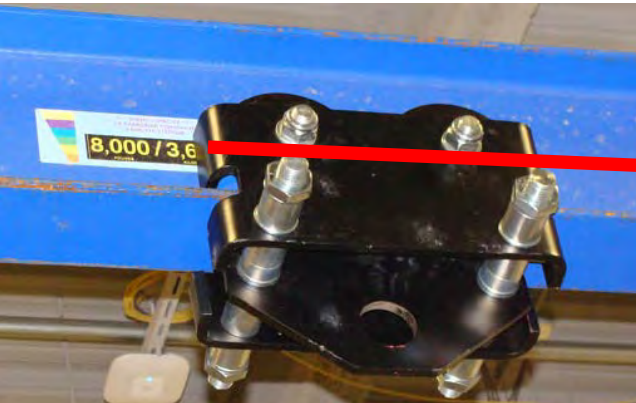


Power Traction Drive Option series



Warning Label Identification

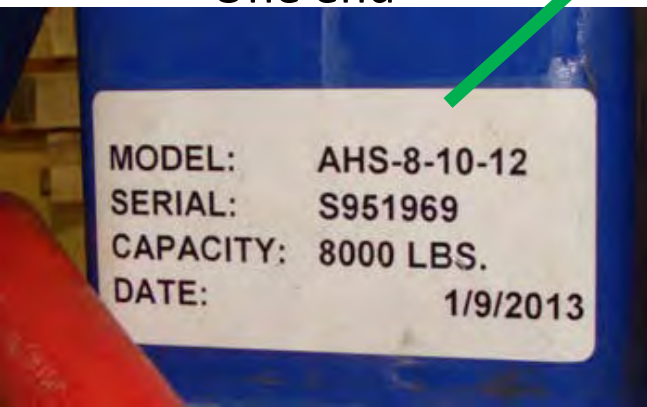
391 Both sides



532

256

One end



⚠ WARNING

- Lock all wheels in perpendicular position to one another before loading.
- Check for damage and be sure all hardware is tight before each use. Remove from service and repair immediately if necessary.
- Never exceed capacity printed on I-Beam.
- Never move or load unless both height adjustment pins are fully inserted.
- Never cantilever loads off of one end.
- Always include weight of hoist and trolley when calculating load
- Use on level concrete or equal surface.
- Stand clear of hanging tools.
- Keep clear of all overhead obstructions especially electrical equipment when moving gantry.
- See owners manual for inspection and testing requirements.

INSPECTION

- **Frequent Inspection** [29 CFR 1910.179(j)(1)(ii)(a)] – Daily to Monthly intervals.
- Daily – All functional operating mechanisms: casters, tele-tubes, leg tubes, and pins. Inspect for maladjustment interfering with proper operation. Verify casters roll smoothly by push/pulling the crane 4-6 feet in one direction.
- Daily – Inspect the hoist, including chains, cables, hooks according to manufacturer's instructions.
- Weekly - All functional operating mechanisms: casters, tele-tubes, leg tubes, pins, nuts and bolts for excessive wear.
- **Periodic Inspection** [29 CFR 1910.179(j)(1)(ii)(b)] – 1 to 12 Month intervals depending on severity of service and environment.
- Frequent inspection requirements plus:
 - Deformed, cracked or corroded components.
 - Loose bolts or rivets.
 - Worn, cracked or distorted parts.

- Copies of the PowerPoint, handouts and Gantry Crane Manuals can be downloaded from <http://www.pipeweldrig.com/RIG.html>, via desktop or mobile, under the category “Gantry Cranes”.