

# LIFT CRANE SERVICE LOAD RATING CHART

MODEL 150FA HYDRAULIC CRANE - 4 SECTION POWER BOOM - 15 TON MAXIMUM LOAD

## RATED LOAD (LBS.)

WORKING RADIUS IN FEET	360° ROTATION		OFF FRONT OF CRANE WITHOUT OUTRIGGERS
	WITHOUT OUTRIGGERS	WITH OUTRIGGERS	
10	7,600	30,000	30,000
12	13,600	28,500	27,750
14	10,950	25,000	16,250
15	9,900	23,300	14,600
16	9,050	21,850	13,300
18	7,500	18,490	11,250
20	6,150	16,020	9,500
22	5,050	14,020	8,000
24	4,250	12,320	6,800
25	3,900	11,560	6,300
30	2,600	8,620	4,100
35	1,750	6,370	3,200
40	1,200	4,970	2,450
45	900	4,330	1,950
50		3,400	1,500
55		2,760	1,200
60		2,080	900

WITH CRANE ON FIRM LEVEL SUPPORTING SURFACE, CAPACITIES BASED ON 85% TIPPING WITH OUTRIGGERS, CAPACITIES BASED ON 75% TIPPING WITHOUT OUTRIGGERS

## 20' JIB CAPACITIES (LBS.)

MAIN BOOM ANGLE	JIB OFFSET ANGLE		
	0°	15°	30°
70°	6,000	4,500	3,000
60°	5,300	3,400	2,500
50°	3,900	2,700	2,150
40°	3,000	2,350	1,850
30°	2,500	2,000	1,500

# WARNING

NOTE: DO NOT DEFACE OR REMOVE THIS SIGN.

AVOID SERIOUS BODILY INJURY OR DEATH. REFER TO OPERATOR MANUAL AND EDNA CRANE SAFETY MANUAL.

THE USER SHALL OPERATE AT REDUCED RATED LOADS TO ALLOW FOR ADVERSE JOB CONDITIONS, SUCH AS, SOFT UNEVEN GROUND, OUT OF LEVEL CONDITIONS, HIGH WINDS, SIDE LOADS, PENDULUM ACTION, JERKING OR SUDDEN STOPPING OF LOADS, HAZARDOUS CONDITIONS, EXPERIENCE OF PERSONNEL, TRAVELING WITH LOADS, ELECTRIC WIRES, ETC. SIDE PULL ON BOOM OR JIB IS HAZARDOUS.

BEFORE LIFTING A LOAD, BE SURE THAT THE WEIGHT OF THE LOAD IS KNOWN, THE PROPER PARTS OF LINE ARE USED, THE LOAD IS SECURED AND RIGGED PROPERLY, THE HOOK HAS A FUNCTIONING HOOK LATCH, THE WIRE ROPE IS IN BOTH GOOD CONDITION AND HAS SUFFICIENT NUMBER OF WRAPS ON THE WIND DRUM, AND ALL PERSONNEL ARE CLEAR.

RATED LOADS, WITHOUT OUTRIGGERS, DEPENDS ON TIRE CAPACITY AND CONDITION OF TIRES. RATINGS ARE BASED ON 1400 x 24 16 PLY TIRES AT 80 PSI STATIC AND CREEP, AND 17.5 x 25 14 PLY TIRES AT 65 PSI STATIC AND CREEP.

RATED LOADS ARE BASED ON EXTENDING THE SMALLEST BOOM EXTENSIONS FIRST. THE FIRST AND SECOND EXTENSIONS ARE HYDRAULICALLY SEQUENCED TO EXTEND AND RETRACT EQUALLY. BOOM LENGTH SHOULD BE AS SHORT AS POSSIBLE TO MAKE A LIFT. IF POSITIONING A LOAD BY CROWDING, REPOSITIONING WITH THE LOWER CROWD IS RECOMMENDED.

RATED LOADS INCLUDE THE WEIGHT OF HOOK BLOCK, SLINGS, AND AUXILIARY LIFTING DEVICES. THEIR WEIGHTS SHALL BE SUBTRACTED FROM THE LISTED RATED LOAD TO OBTAIN THE NET LOAD TO BE LIFTED.

SINGLE LINE WEIGHTED HOOK WEIGHS 125 LBS. DO NOT TWO-BLOCK.

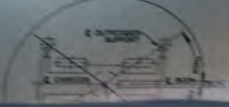
MULTIPLE LINE HOOK BLOCK WEIGHS 375 LBS. DO NOT TWO-BLOCK.

WORKING RADIUS IS THE HORIZONTAL DISTANCE FROM A PROJECTION OF THE AXIS OF ROTATION WITH RESPECT TO THE SUPPORTING SURFACE, BEFORE LOADING, TO THE CENTER OF THE VERTICAL HOISTLINE OR TACKLE WITH LOAD APPLIED.

DO NOT OPERATE AT RADII OR BOOM ANGLES WHERE CAPACITIES ARE NOT LISTED. FOR TIPPING LIMITATIONS, DO NOT EXCEED THE CRANE RATING CHART.

RATED LOADS ABOVE THE HEAVY LINE ARE BASED ON THE MACHINE'S HYDRAULIC OR STRUCTURAL COMPETENCE AND NOT ON THE MACHINE'S STABILITY.

RATED LOADS ARE BASED ON FREELY SUSPENDED LOADS. DO NOT TWO-BLOCK.



# WARNING

NOTE: DO NOT DEFACE OR REMOVE THIS SIGN.

AVOID SERIOUS BODILY INJURY OR DEATH. REFER TO OPERATOR MANUAL AND EDNA CRANE SAFETY MANUAL.

THE USER SHALL OPERATE AT REDUCED RATED LOADS TO ALLOW FOR ADVERSE JOB CONDITIONS, SUCH AS, SOFT UNEVEN GROUND, OUT OF LEVEL CONDITIONS, HIGH WINDS, SIDE LOADS, PENDULUM ACTION, JERKING OR SUDDEN STOPPING OF LOADS, HAZARDOUS CONDITIONS, EXPERIENCE OF PERSONNEL, TRAVELING WITH LOADS, ELECTRIC WIRES, ETC. SIDE PULL ON BOOM OR JIB IS HAZARDOUS.

BEFORE LIFTING A LOAD, BE SURE THAT THE WEIGHT OF THE LOAD IS KNOWN, THE PROPER PARTS OF LINE ARE USED, THE LOAD IS SECURED AND RIGGED PROPERLY, THE HOOK HAS A FUNCTIONING HOOK LATCH, THE WIRE ROPE IS IN BOTH GOOD CONDITION AND HAS SUFFICIENT NUMBER OF WRAPS ON THE WIND DRUM, AND ALL PERSONNEL ARE CLEAR.

RATED LOADS, WITHOUT OUTRIGGERS, DEPENDS ON TIRE CAPACITY AND CONDITION OF TIRES. RATINGS ARE BASED ON 1400 x 24 16 PLY TIRES AT 80 PSI STATIC AND CREEP, AND 17.5 x 25 14 PLY TIRES AT 65 PSI STATIC AND CREEP.

RATED LOADS ARE BASED ON EXTENDING THE SMALLEST BOOM EXTENSIONS FIRST. THE FIRST AND SECOND EXTENSIONS ARE HYDRAULICALLY SEQUENCED TO EXTEND AND RETRACT EQUALLY. BOOM LENGTH SHOULD BE AS SHORT AS POSSIBLE TO MAKE A LIFT. IF POSITIONING A LOAD BY CROWDING, REPOSITIONING WITH THE LOWER CROWD IS RECOMMENDED.

RATED LOADS INCLUDE THE WEIGHT OF HOOK BLOCK, SLINGS, AND AUXILIARY LIFTING DEVICES. THEIR WEIGHTS SHALL BE SUBTRACTED FROM THE LISTED RATED LOAD TO OBTAIN THE NET LOAD TO BE LIFTED.

SINGLE LINE WEIGHTED HOOK WEIGHS 125 LBS. DO NOT TWO-BLOCK.

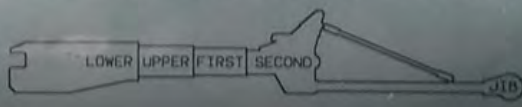
MULTIPLE LINE HOOK BLOCK WEIGHS 375 LBS. DO NOT TWO-BLOCK.

WORKING RADIUS IS THE HORIZONTAL DISTANCE FROM A PROJECTION OF THE AXIS OF ROTATION WITH RESPECT TO THE SUPPORTING SURFACE, BEFORE LOADING, TO THE CENTER OF THE VERTICAL HOISTLINE OR TACKLE WITH LOAD APPLIED.

DO NOT OPERATE AT RADII OR BOOM ANGLES WHERE CAPACITIES ARE NOT LISTED. FOR TIPPING LIMITATIONS, DO NOT EXCEED THE CRANE RATING CHART.

RATED LOADS ABOVE THE HEAVY LINE ARE BASED ON THE MACHINE'S HYDRAULIC OR STRUCTURAL COMPETENCE AND NOT ON THE MACHINE'S STABILITY.

RATED LOADS ARE BASED ON FREELY SUSPENDED LOADS. DO NOT TWO-BLOCK.



WITH CRANE ON FIRM LEVEL SUPPORTING SURFACE, CAPACITIES BASED ON 85% TIPPING WITH OUTRIGGERS, CAPACITIES BASED ON 75% TIPPING WITHOUT OUTRIGGERS

## 20' JIB CAPACITIES (LBS.)

MAIN BOOM ANGLE	JIB OFFSET ANGLE		
	0°	15°	30°
70°	6,000	4,500	3,000
60°	5,300	3,400	2,500
50°	3,900	2,700	2,150
40°	3,000	2,350	1,850
30°	2,500	2,000	1,500

JIB MOVEMENT AND PINNING MUST BE CONTROLLED DURING ERECTION AND STOWAGE.

THE LOADS GIVEN ON THE JIB CAPACITY CHART ARE THE MAXIMUM ALLOWABLE LOADS DUE TO STRUCTURAL LIMITATIONS OF THE JIB AND BOOM.

THE LOADS ON THE RATED LOAD CHART ARE TO BE REDUCED WHEN LIFTING WITH THE MAIN BOOM HOOK BLOCK AS FOLLOWS:  
1200 LBS. WITH THE JIB IN A WORKING POSITION.  
800 LBS. WITH THE JIB STOWED.

PARTS OF LINE	RATED LOAD POUNDS
1	6,000
2	12,000
3	18,000
4	24,000
5	30,000