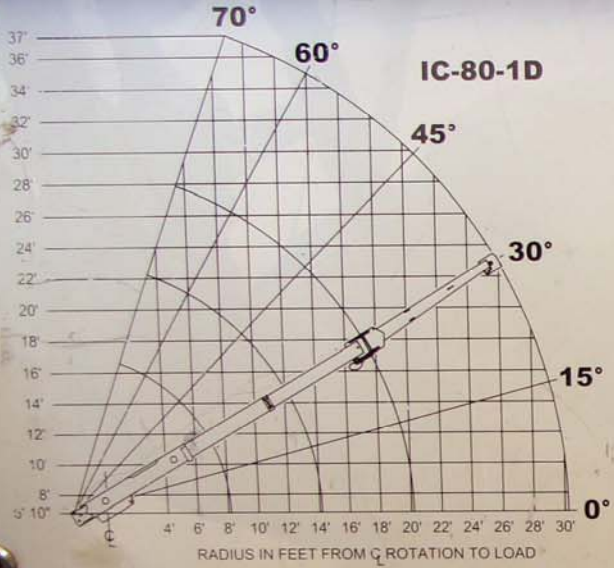


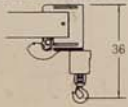
# CRANE CAPACITY CHART



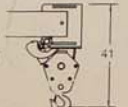
ALL CAPACITIES FOR 360° ROTATION

LOAD RADIUS FEET	3 - SECTION BOOM		10' BOOM EXTENSION INSTALLED	
	ON RUBBER	ON OUTRIGGERS	ON RUBBER	ON OUTRIGGERS
5	9500	14900	7000	7000
6	8500	14500	6000	6000
8	6000	10250	5000	5000
10	4150	7700	4000	4000
12	3100	6550	3275	3450
14	2425	5550	2650	3050
16	1975	4450	2175	2700
18	1625	3950	1850	2250
20	1400	3550	1550	2250
22			1325	2250
24			1150	2250
26			975	2250
28			825	2150
30			675	1825

CAPACITIES ON OUTRIGGERS ARE 85% OF TIPPING LOADS. CAPACITIES ON RUBBER ARE 75% OF TIPPING LOADS.  
 CAPACITIES BELOW BOLD LINE ARE LIMITED BY TIPPING. OTHER CAPACITIES ARE LIMITED BY STRUCTURAL OR HYDRAULIC CAPABILITY.



USE SINGLE PART LOAD LINE FOR LOADS TO 9500 LBS.



USE TWO PART LOADLINE FOR LOADS TO 14900 LBS.

CARRY CAPACITY SPEED LIMIT 3 MPH  
 DECK LOAD CAPACITY 12000 LBS. (CENTERED OVER AXLE)

PERSONNEL BUCKET CAPACITY - OUTRIGGERS EXTENDED 300 LBS. PER BUCKET 600 LBS. TOTAL. THE BOOMS ON THIS UNIT ARE ALL STEEL AND HAVE NO LINE VOLTAGE RATING. MAXIMUM HYDRAULIC PRESSURE 3000 PSI.

DEDUCT 120 LBS. FROM ALL "ON RUBBER" CAPACITIES WHEN BOOM EXTENSION IS STOWED ON BASE BOOM.

ALL CAPACITIES APPLY TO OPERATION ON FIRM LEVEL SURFACES.

**OPERATION:**

1. READ AND UNDERSTAND OWNERS MANUAL BEFORE OPERATING THIS CRANE.
2. CHECK LEVEL OF HYDRAULIC OIL DAILY.
3. CHECK UNIT FOR VISIBLE DEFECTS AND LOOSE PARTS.
4. SET VEHICLE PARK BRAKE SECURELY.
5. START ENGINE.
6. EXTEND OUTRIGGERS TO SOLID FOOTING.
7. OPERATE ALL HYDRAULIC CONTROLS SLOWLY AND DELIBERATELY FOR SMOOTH MOTION.

THE LOAD HOIST LINE ON THIS UNIT MUST BE 9/16" DIA. 6 X 37-IWRC-EIP WIRE ROPE WITH A MINIMUM BREAKING STRENGTH OF 31,500 LBS. TIRE PRESSURE 9.00 X 15 12 PR - 95 PSI; 10.00 X 15 12 PR - 85 PSI.

MODEL NO. **IC801D**

SERIAL NO. **147193**

BRODERSON MANUFACTURING CORP.  
 P. O. BOX 14770 LENEXA, KANSAS 66285

C-54-00512